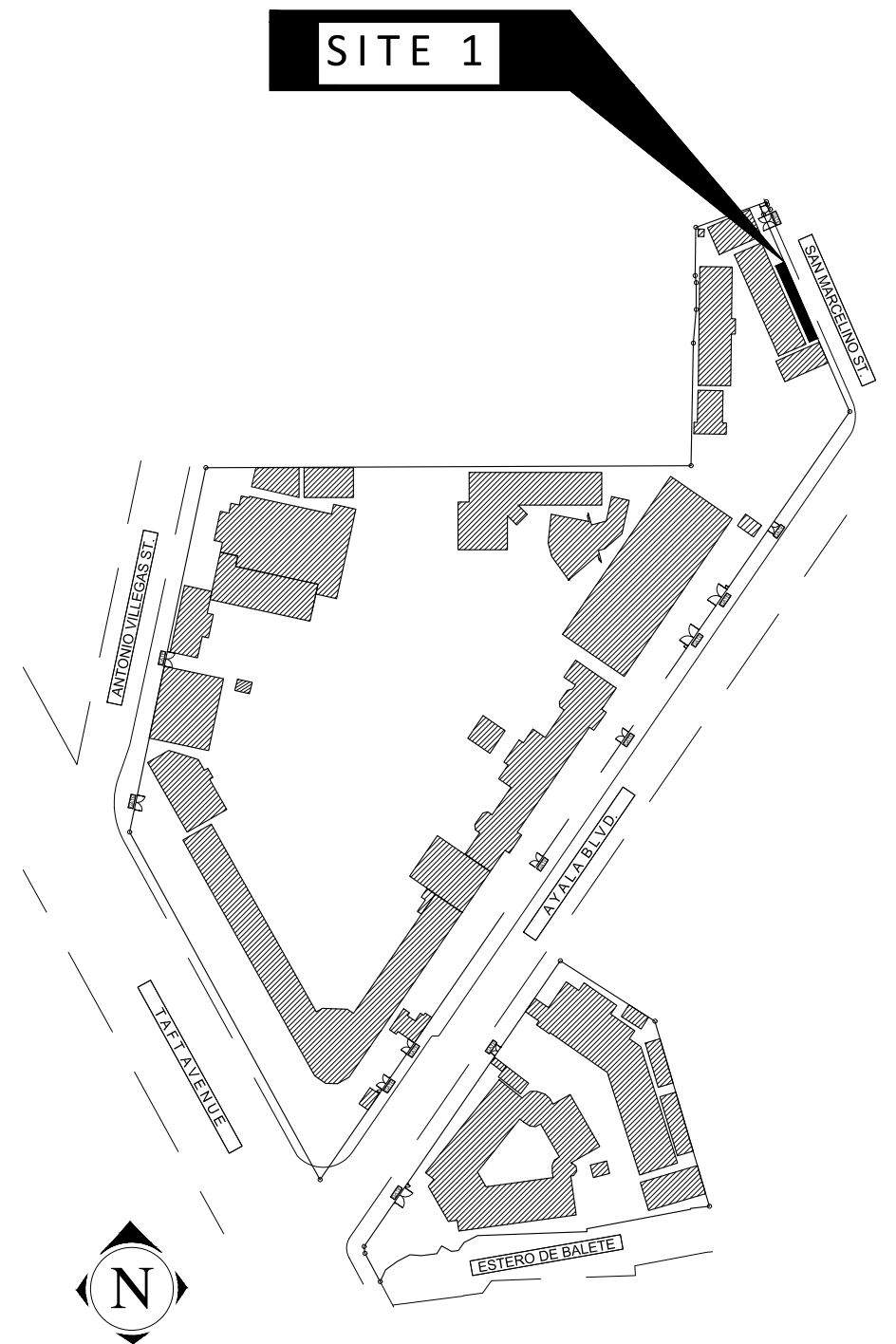




1 PERSPECTIVE  
A-01 SCALE NTS

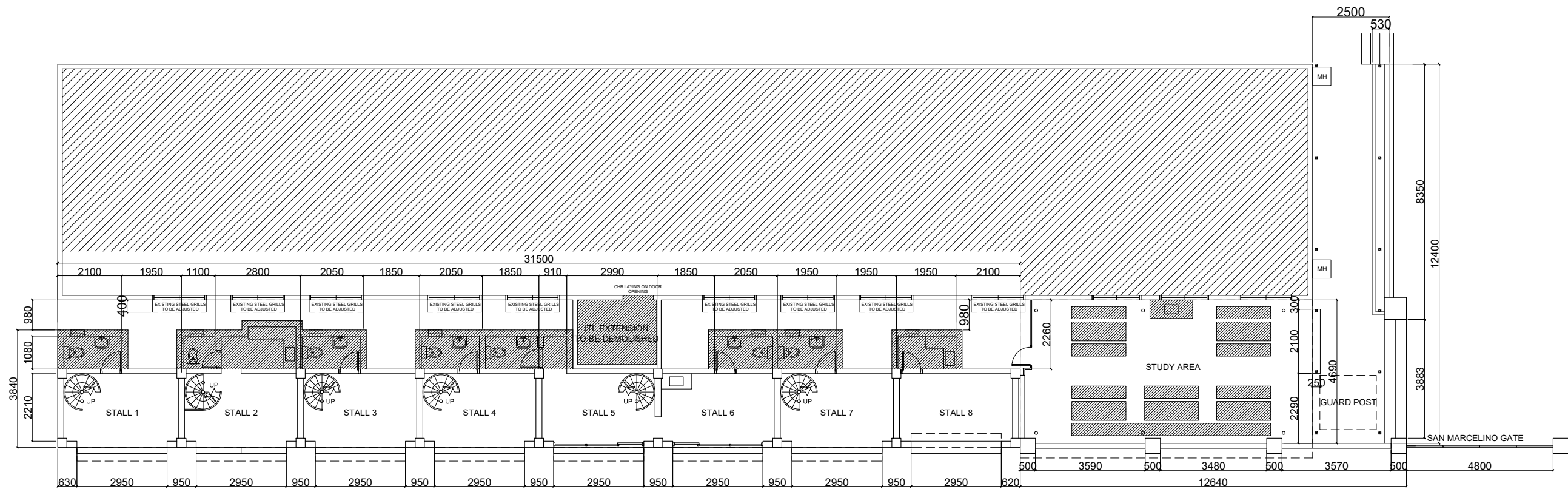


2 LOCATION MAP  
A-01 SCALE NTS

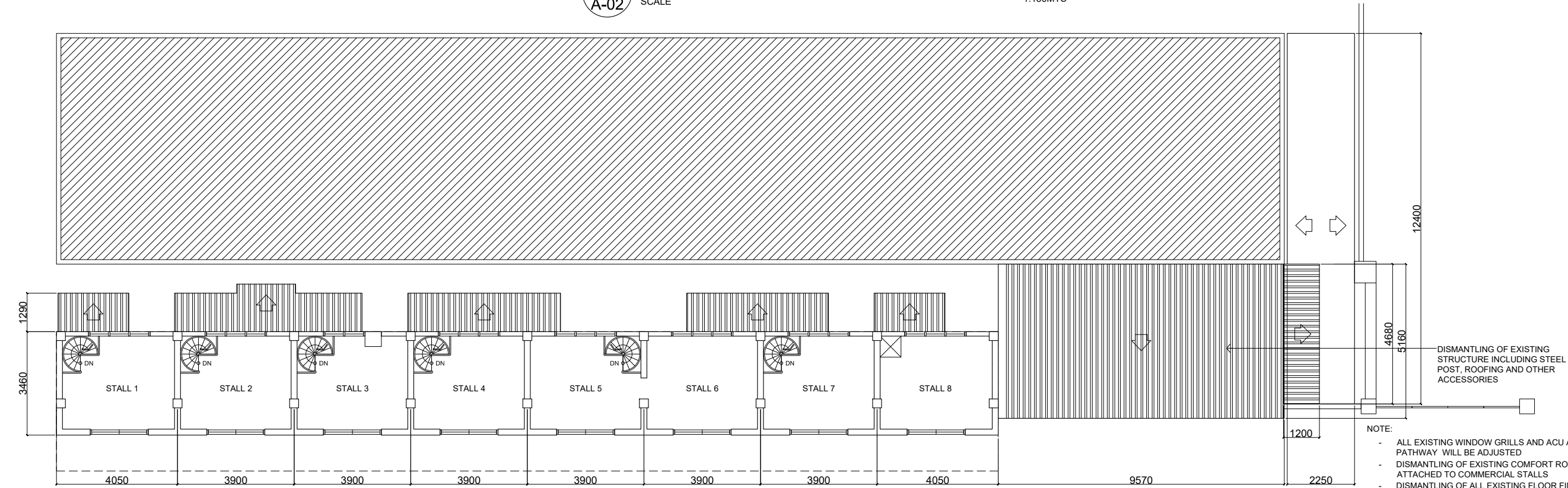


Republic of the Philippines  
PHILIPPINE NORMAL UNIVERSITY  
Taft Avenue, Manila

PROJECT TITLE:	PREPARED BY:	SUBMITTED BY:	RECOMMENDING APPROVAL:	APPROVED BY:	DATE:	SHEET CONTENTS:	SHEET NO.:
REPAIR & IMPROVEMENT OF COMMERCIAL STALLS ALONG SAN MARCELINO	AR. JOHN D. TADEJA JR., RmP ARCHITECT, FMSO	JOHN P. NATIVIDAD DIRECTOR, FMSO	DR. LORDINIO A. VERGARA VICE-PRESIDENT FOR FINANCE AND ADMINISTRATION	DR. BERT J. TUGA PRESIDENT	APR. , 2026	PERSPECTIVES LOCATION MAP	A-01
	PRC NUMBER 0045490 PTR NUMBER 37104817				CAD BY: JBC		



**1 AS-BUILT GROUND FLOOR PLAN**  
 A-02 SCALE 1:150MTS

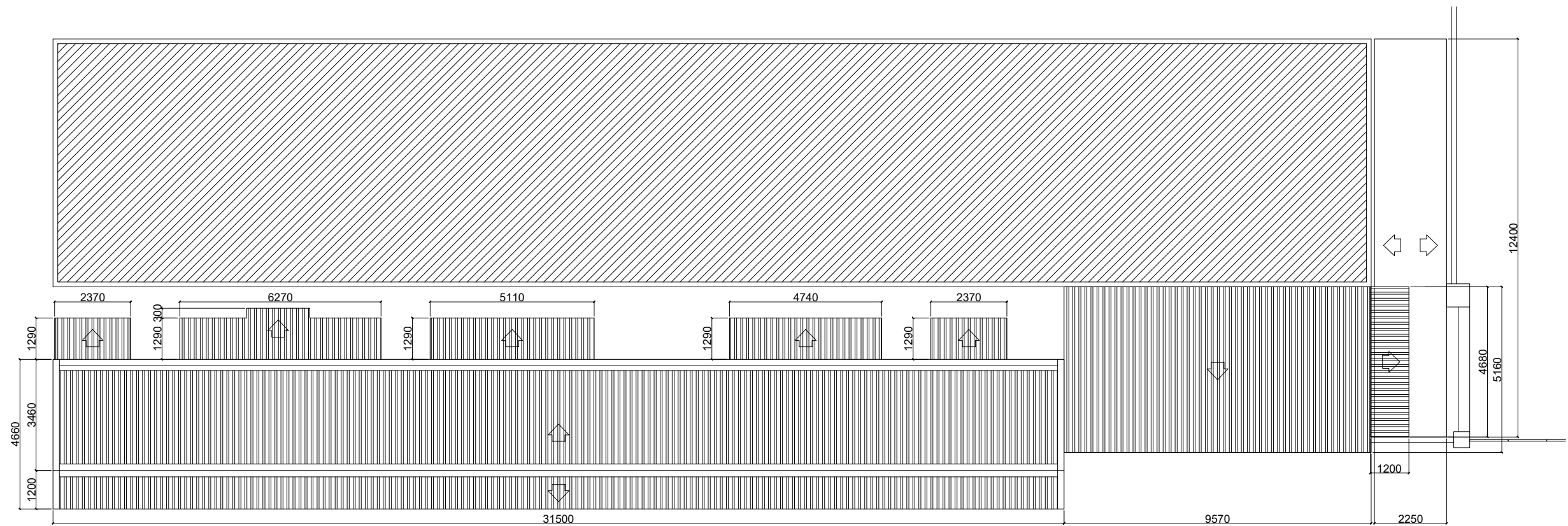


**2 AS-BUILT SECOND FLOOR PLAN**  
 A-02 SCALE 1:150MTS

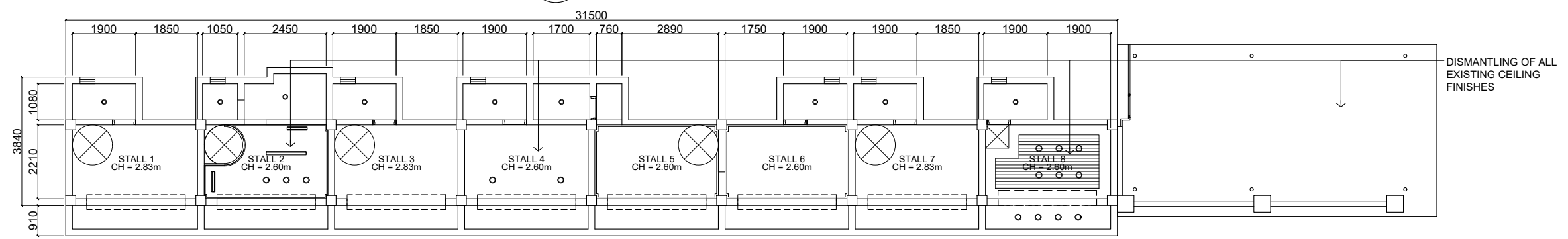


Republic of the Philippines  
 PHILIPPINE NORMAL UNIVERSITY  
 Taft Avenue, Manila

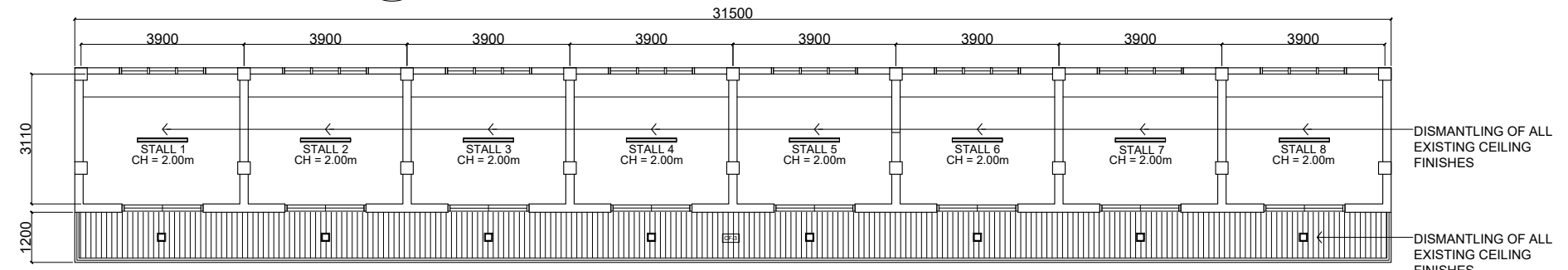
PROJECT TITLE:	PREPARED BY:	SUBMITTED BY:	RECOMMENDING APPROVAL:	APPROVED BY:	DATE:	SHEET CONTENTS:	SHEET NO.:
REPAIR & IMPROVEMENT OF COMMERCIAL STALLS ALONG SAN MARCELINO	AR. JOHN D. TADEJA JR., RmP ARCHITECT, FMSO	JOHN P. NATIVIDAD DIRECTOR, FMSO	DR. LORDINIO A. VERGARA VICE-PRESIDENT FOR FINANCE AND ADMINISTRATION	DR. BERT J. TUGA PRESIDENT	APR. , 2026 CAD BY: JDT	AS-BUILT GROUND FLOOR PLAN AS-BUILT SECOND FLOOR PLAN	A-02 A 10
	PRC NUMBER 0045490 PTR NUMBER 37104817						



**1 AS-BUILT ROOF FLOOR PLAN**  
 A-03 SCALE 1:150MTS



**2 AS-BUILT GROUND FLOOR CEILING PLAN**  
 A-03 SCALE 1:150MTS



**3 AS-BUILT SECOND FLOOR CEILING PLAN**  
 A-03 SCALE 1:150MTS



Republic of the Philippines  
 PHILIPPINE NORMAL UNIVERSITY  
 Taft Avenue, Manila

PROJECT TITLE:  
 REPAIR & IMPROVEMENT OF COMMERCIAL STALLS ALONG SAN MARCELINO

PREPARED BY:  
 AR. JOHN D. TADEJA JR., RmP  
 ARCHITECT, FMSO  
 PRC NUMBER 0045490  
 PTR NUMBER 37104817

SUBMITTED BY:  
 JOHN P. NATIVIDAD  
 DIRECTOR, FMSO

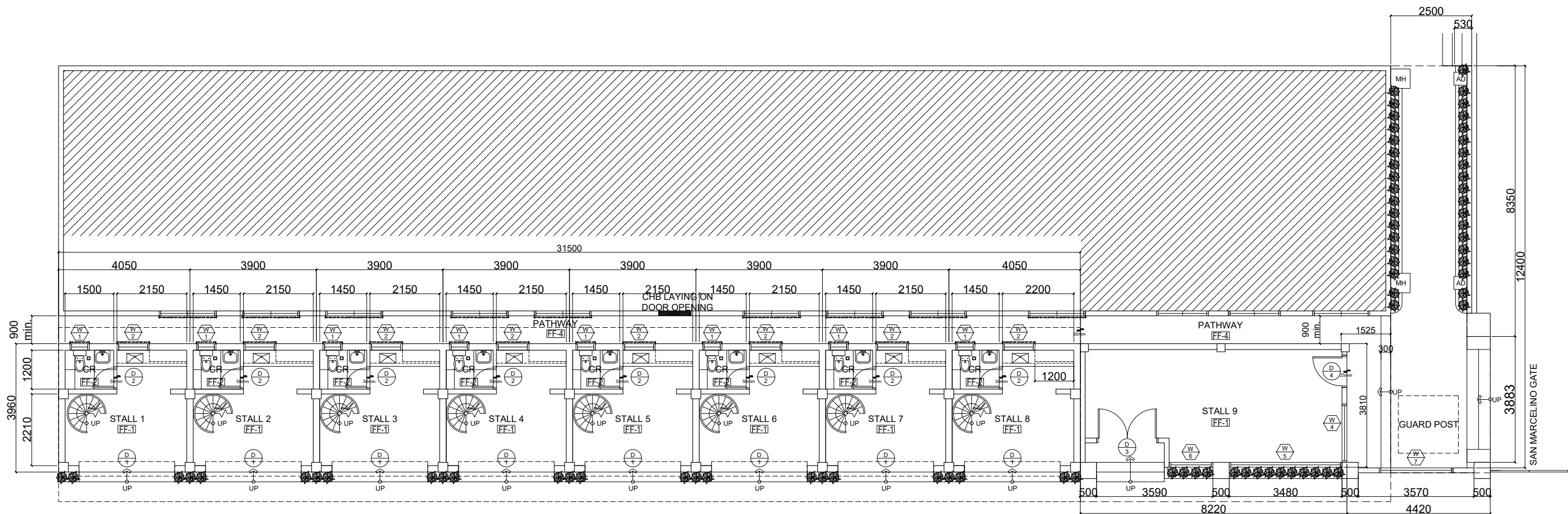
RECOMMENDING APPROVAL:  
 DR. LORDINIO A. VERGARA  
 VICE-PRESIDENT FOR FINANCE AND ADMINISTRATION

APPROVED BY:  
 DR. BERT J. TUGA  
 PRESIDENT

DATE:  
 APR., 2026  
 CAD BY:  
 JDT

SHEET CONTENTS:  
 AS-BUILT ROOF PLAN  
 AS-BUILT CEILING PLAN

SHEET NO.:  
**A-03**  
 A 10



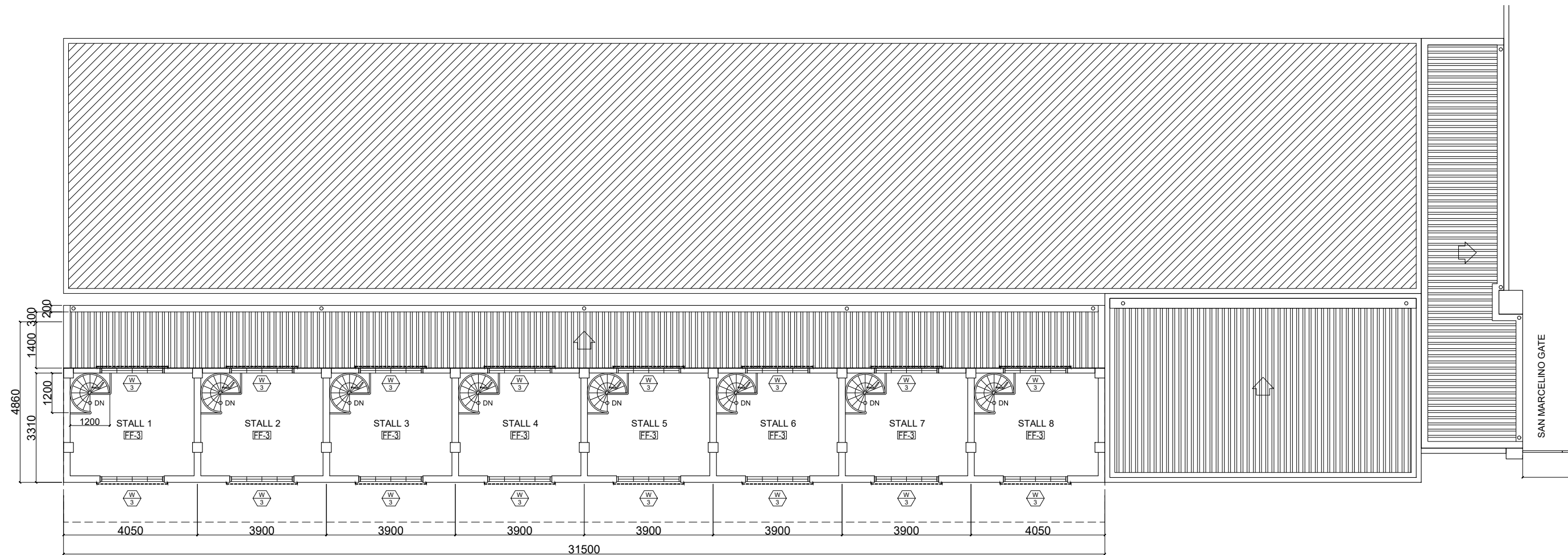
1 PROPOSED GROUND FLOOR PLAN  
 A-04 SCALE 1:130MTS

FLOOR FINISHES SCHEDULE:	
FF-1	600mm X 600mm PORCELAIN TILES
FF-2	600mm X 600mm NON-SKID PORCELAIN TILES
FF-3	300mm X 300mm X 3MM THK VINYL TILES
FF-4	PLAIN CEMENT, ROUGH FINISH



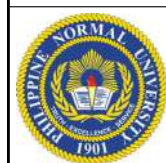
Republic of the Philippines  
 PHILIPPINE NORMAL UNIVERSITY  
 Taft Avenue, Manila

PROJECT TITLE:	PREPARED BY:	SUBMITTED BY:	RECOMMENDING APPROVAL:	APPROVED BY:	DATE:	SHEET CONTENTS:	SHEET NO.:
REPAIR & IMPROVEMENT OF COMMERCIAL STALLS ALONG SAN MARCELINO	AR. JOHN D. TADEJA JR., RmP ARCHITECT, FMSO	JOHN P. NATIVIDAD DIRECTOR, FMSO	DR. LORDINIO A. VERGARA VICE-PRESIDENT FOR FINANCE AND ADMINISTRATION	DR. BERT J. TUGA PRESIDENT	APR. , 2026	PROPOSED GROUND FLOOR PLAN	A-04
	PRC NUMBER 0045490 PTR NUMBER 37104817				CAD BY: JDT		A 10



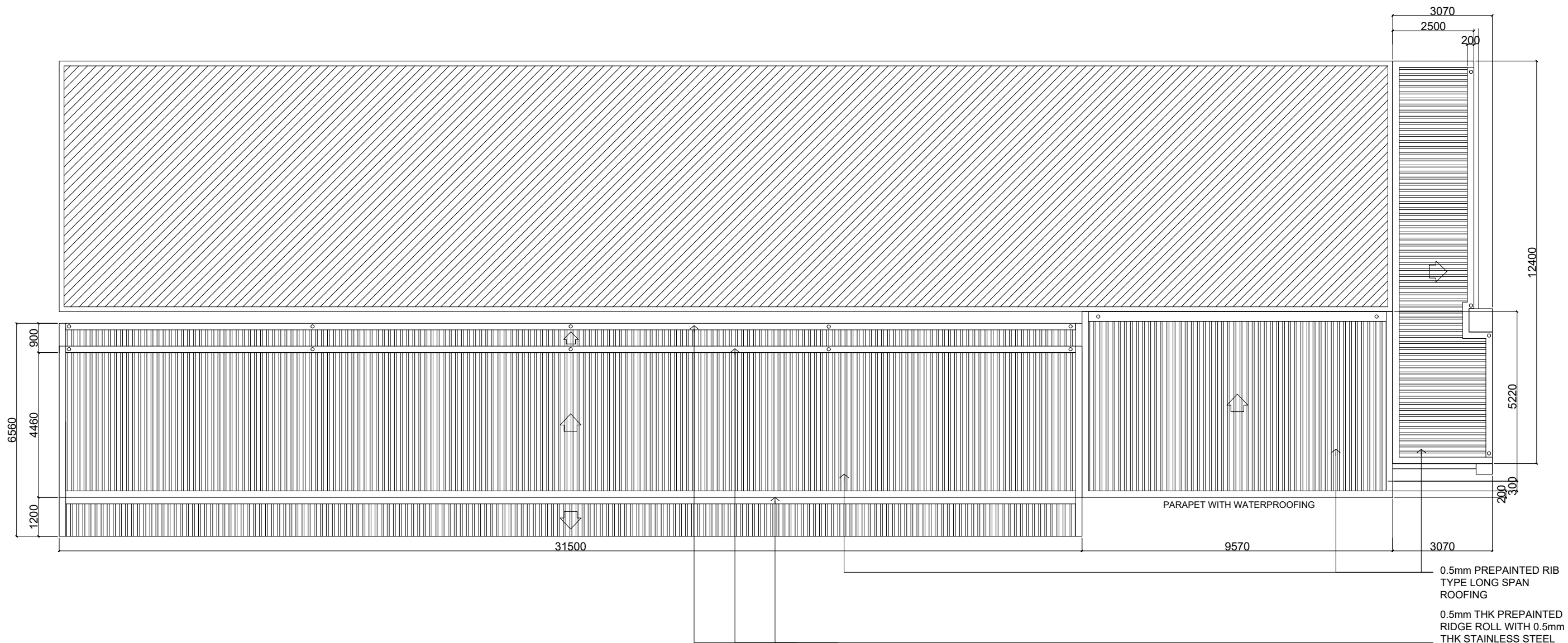
1
**PROPOSED SECOND FLOOR PLAN**  
 A-05 SCALE 1:130MTS

FLOOR FINISHES SCHEDULE:	
FF-1	600mm X 600mm PORCELAIN TILES
FF-2	600mm X 600mm NON-SKID PORCELAIN TILES
FF-3	300mm X 300mm X 3MM THK VINYL TILES
FF-4	PLAIN CEMENT, ROUGH FINISH



Republic of the Philippines  
**PHILIPPINE NORMAL UNIVERSITY**  
 Taft Avenue, Manila

PROJECT TITLE:	PREPARED BY:	SUBMITTED BY:	RECOMMENDING APPROVAL:	APPROVED BY:	DATE:	SHEET CONTENTS:	SHEET NO.:
REPAIR & IMPROVEMENT OF COMMERCIAL STALLS ALONG SAN MARCELINO	AR. JOHN D. TADEJA JR., RmP ARCHITECT, FMSO	JOHN P. NATIVIDAD DIRECTOR, FMSO	DR. LORDINIO A. VERGARA VICE-PRESIDENT FOR FINANCE AND ADMINISTRATION	DR. BERT J. TUGA PRESIDENT	APR. , 2026	PROPOSED SECOND FLOOR PLAN	A-05
PRC NUMBER 0045490 PTR NUMBER 37104817					CAD BY: JDT		
							A   10

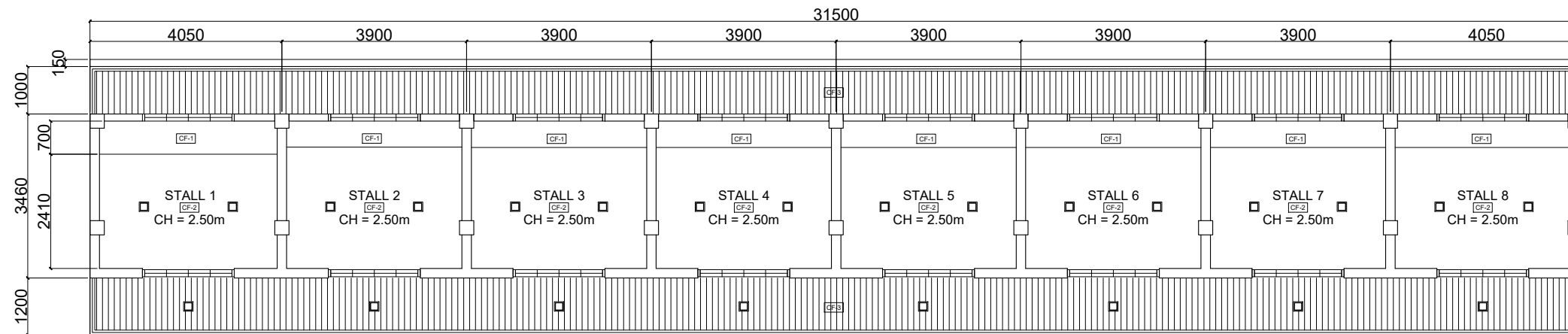
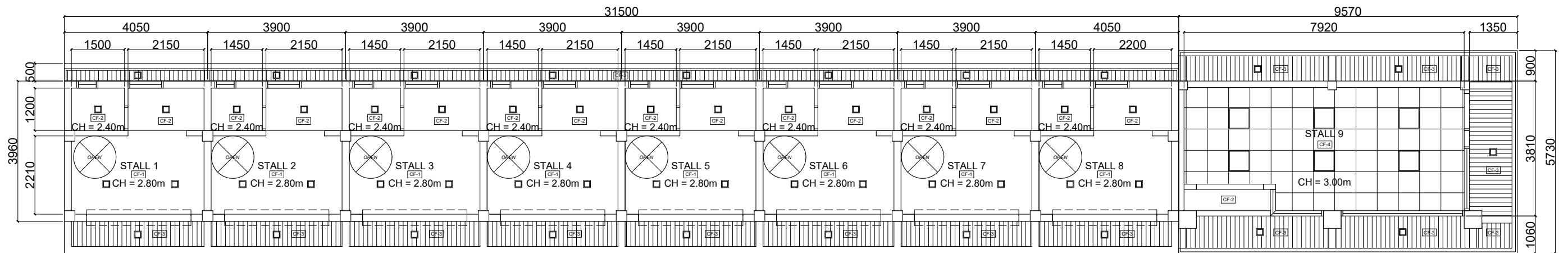


**1** PROPOSED ROOF PLAN  
 A-06 SCALE 1:130MTS



Republic of the Philippines  
 PHILIPPINE NORMAL UNIVERSITY  
 Taft Avenue, Manila

PROJECT TITLE:	PREPARED BY:	SUBMITTED BY:	RECOMMENDING APPROVAL:	APPROVED BY:	DATE:	SHEET CONTENTS:	SHEET NO.:
REPAIR & IMPROVEMENT OF COMMERCIAL STALLS ALONG SAN MARCELINO	AR. JOHN D. TADEJA JR., RmP ARCHITECT, FMSO	JOHN P. NATIVIDAD DIRECTOR, FMSO	DR. LORDINIO A. VERGARA VICE-PRESIDENT FOR FINANCE AND ADMINISTRATION	DR. BERT J. TUGA PRESIDENT	APR. , 2026	PROPOSED ROOF PLAN	A-06
	PRC NUMBER 0045490 PTR NUMBER 37104817				CAD BY: JDT		A 10



CEILING FINISHES SCHEDULE:	
CF-1	PLAIN CEMENT, PAINTED FINISH
CF-2	4.5mm THK FIBER CEMENT BOARD, PAINTED
CF-3	METAL SPANDREL (WOOD GRAIN FINISH)
CF-4	600mm X 600mm X 4.5mm THK FCB, PAINTED



Republic of the Philippines  
 PHILIPPINE NORMAL UNIVERSITY  
 Taft Avenue, Manila

PROJECT TITLE:  
 REPAIR & IMPROVEMENT OF COMMERCIAL  
 STALLS ALONG SAN MARCELINO

PREPARED BY:  
 AR. JOHN D. TADEJA JR., RmP  
 ARCHITECT, FMSO  
 PRC NUMBER 0045490  
 PTR NUMBER 37104817

SUBMITTED BY:  
 JOHN P. NATIVIDAD  
 DIRECTOR, FMSO

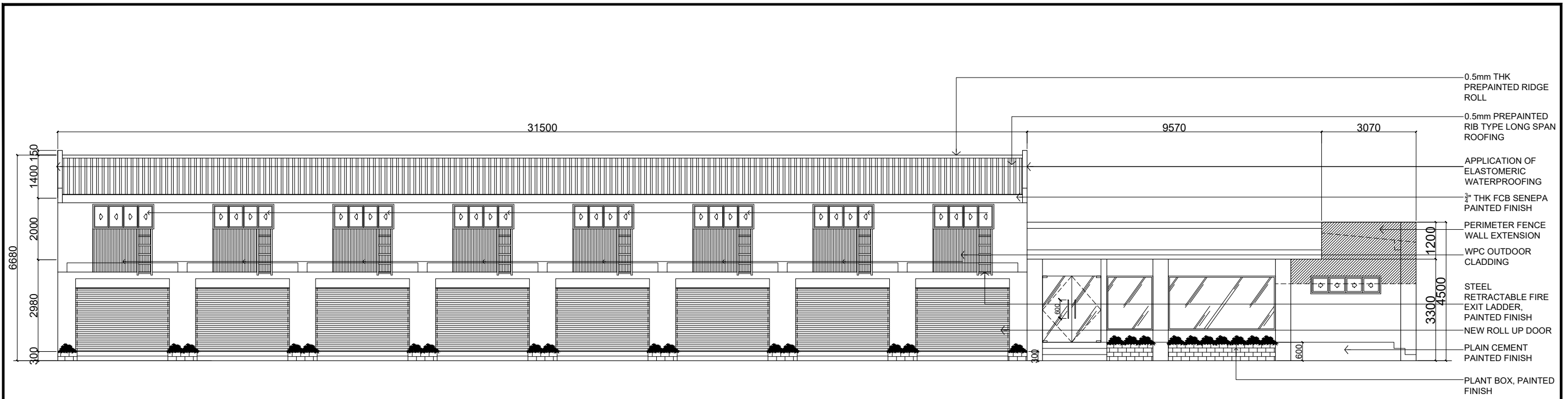
RECOMMENDING APPROVAL:  
 DR. LORDINIO A. VERGARA  
 VICE-PRESIDENT FOR FINANCE  
 AND ADMINISTRATION

APPROVED BY:  
 DR. BERT J. TUGA  
 PRESIDENT

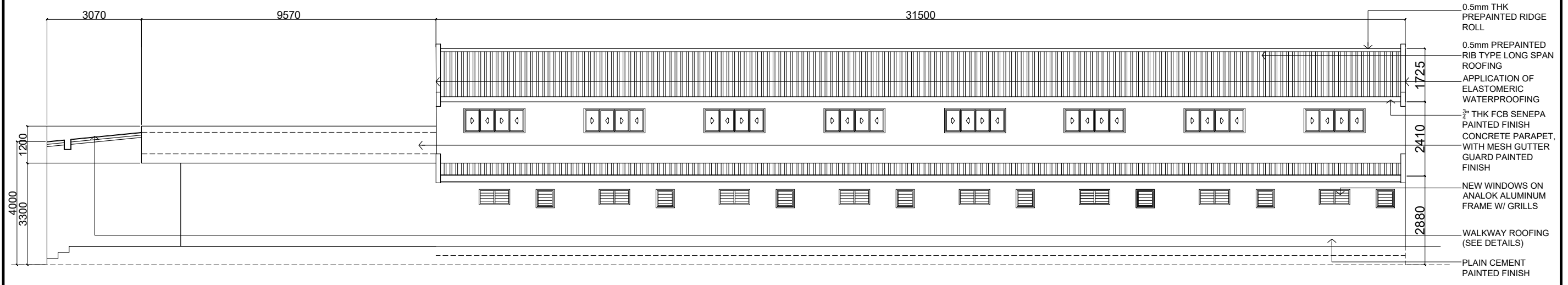
DATE:  
 APR. , 2026  
 CAD BY:  
 JDT

SHEET CONTENTS:  
 PROPOSED CEILING PLAN


SHEET NO.:  
 A-07  
 A 10

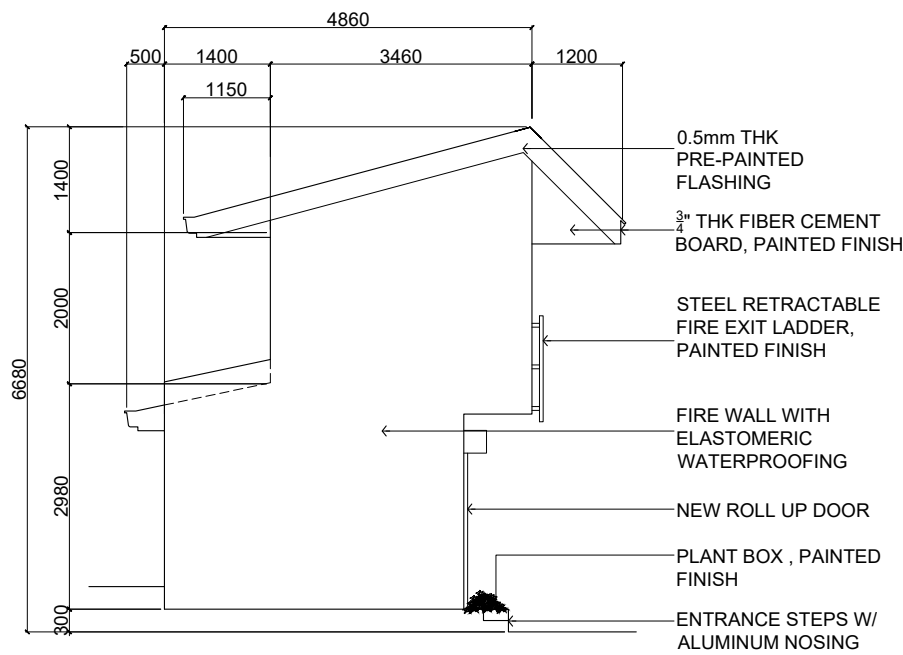


**1 FRONT ELEVATION**  
 A-08 SCALE 1:135MTS

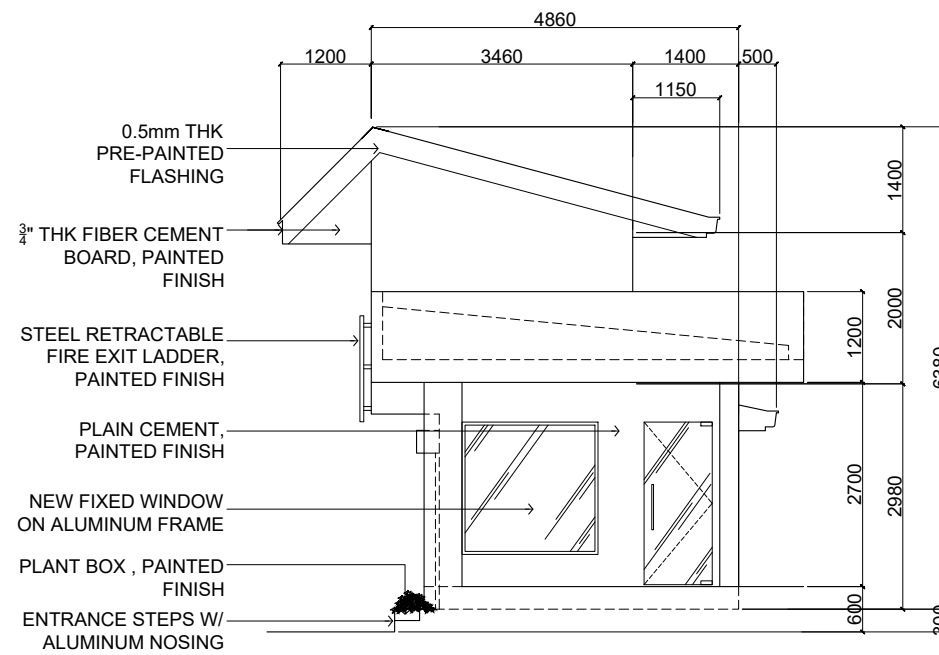


**2 REAR ELEVATION**  
 A-08 SCALE 1:135MTS

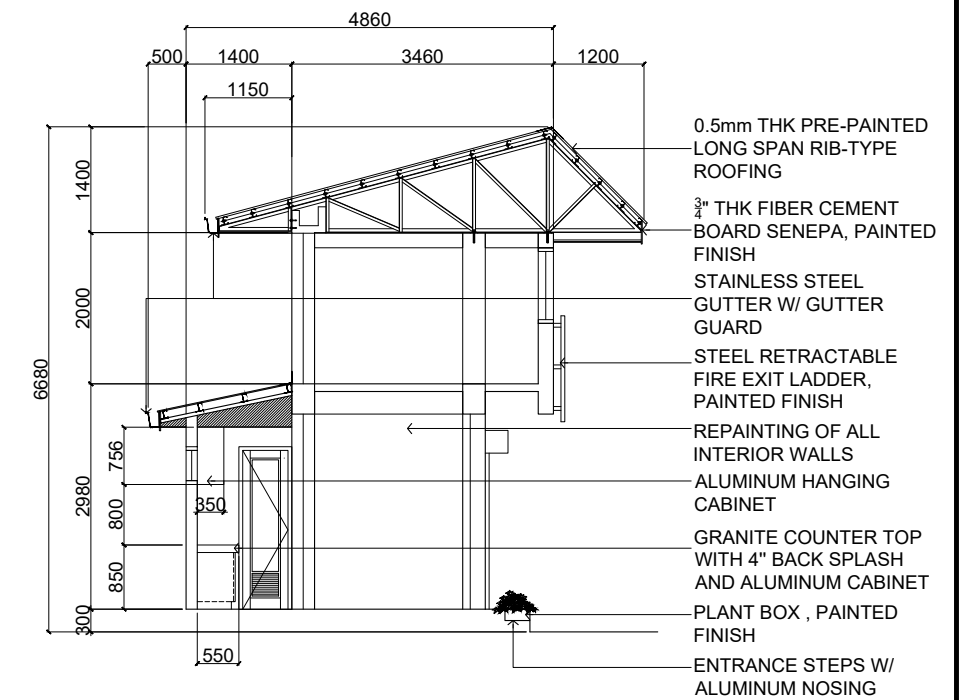
 Republic of the Philippines <b>PHILIPPINE NORMAL UNIVERSITY</b> Taft Avenue, Manila	PROJECT TITLE:	PREPARED BY:	SUBMITTED BY:	RECOMMENDING APPROVAL:	APPROVED BY:	DATE:	SHEET CONTENTS:	SHEET NO.:
	REPAIR & IMPROVEMENT OF COMMERCIAL STALLS ALONG SAN MARCELINO	AR. JOHN D. TADEJA JR., RmP ARCHITECT, FMSO	JOHN P. NATIVIDAD DIRECTOR, FMSO	DR. LORDINIO A. VERGARA VICE-PRESIDENT FOR FINANCE AND ADMINISTRATION	DR. BERT J. TUGA PRESIDENT	APR. , 2026	ELEVATIONS	A-08
		PRC NUMBER 0045490 PTR NUMBER 37104817				CAD BY: JDT		



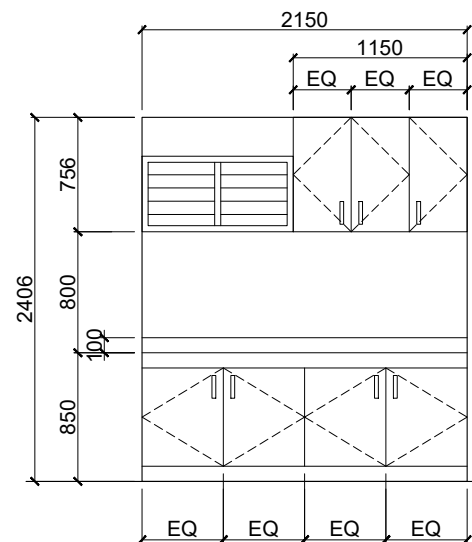
**1 LEFT SIDE ELEVATION**  
A-09 SCALE 1:100MTS



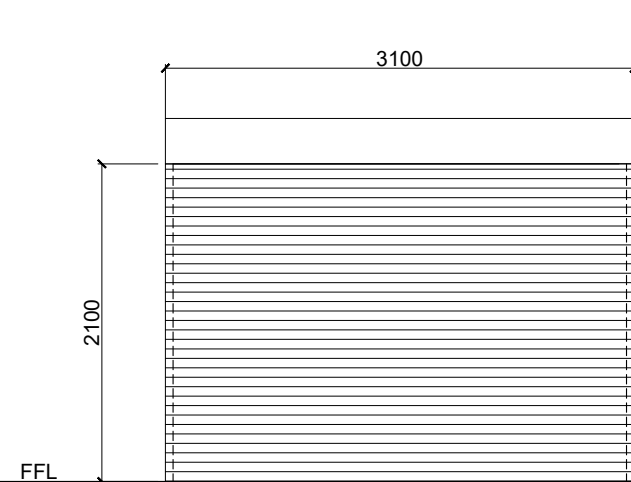
**2 RIGHT SIDE ELEVATION**  
A-09 SCALE 1:100MTS



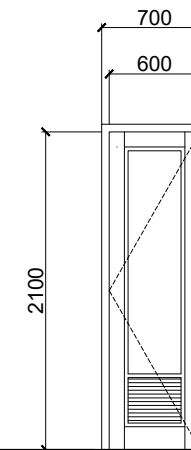
**3 CROSS SECTION**  
A-09 SCALE 1:100MTS



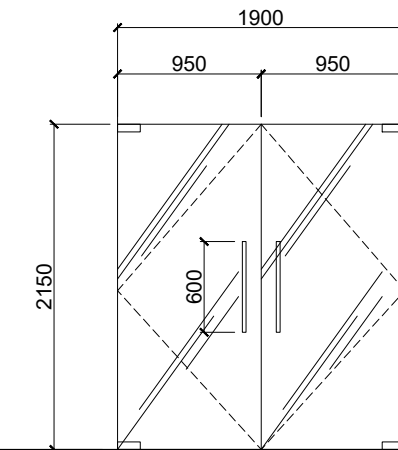
GRANITE COUNTER TOP WITH 4" BACK SPLASH AND ALUMINUM COUNTER AND HANGING CABINET (WHITE) COMPLETE WITH ACCESSORIES AND LOCKSET



D 1	TYPE	DESCRIPTION
	SWING TYPE DOOR	GAUGE 18 MANUAL ALUMINUM ROLL UP DOOR ON POWDER COATED FINISH, COMPLETE WITH LOCKSET AND ACCESSORIES
	QUANTITY	LOCATION
	8 SETS	STALLS



D 2	TYPE	DESCRIPTION
	SWING TYPE DOOR	MARINE LOUVERED DOOR, PAINTED FINISH W/ LEVER TYPE DOOR KNOB AND STAINLESS HEAVY DUTY HINGE
	QUANTITY	LOCATION
	8 SET	COMFORT ROOM



D 3	TYPE	DESCRIPTION
	SWING TYPE DOOR	12mm THK FRAME LESS TEMPERED GLASS DOOR WITH STAINLESS H-HANDLE, LOCK COMPLETE W/ ACCESSORIES AND ROLL UP COVER
	QUANTITY	LOCATION
	1 SET	SECOND FLOOR COMFORT ROOMS

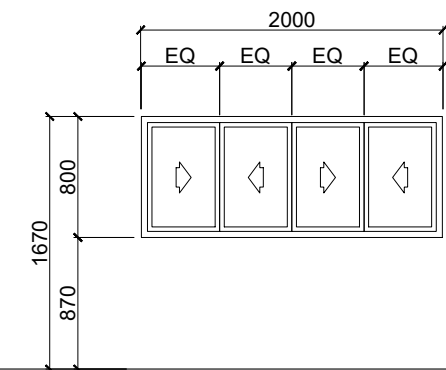
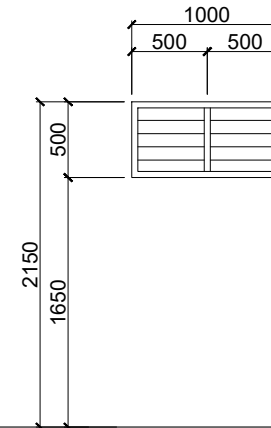
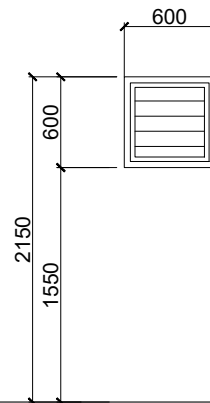
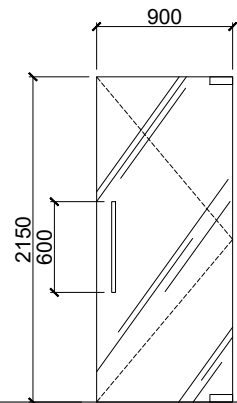
**4 TYP. CABINET DETAILS**  
A-10 SCALE 1:50MTS

**5 SCHEDULE OF DOORS AND WINDOWS**  
A-09 SCALE 1:50MTS



Republic of the Philippines  
PHILIPPINE NORMAL UNIVERSITY  
Taft Avenue, Manila

PROJECT TITLE:	PREPARED BY:	SUBMITTED BY:	RECOMMENDING APPROVAL:	APPROVED BY:	DATE:	SHEET CONTENTS:	SHEET NO.:
REPAIR & IMPROVEMENT OF COMMERCIAL STALLS ALONG SAN MARCELINO	AR. JOHN D. TADEJA JR., RmP ARCHITECT, FMSO PRC NUMBER 0045490 PTR NUMBER 37104817	JOHN P. NATIVIDAD DIRECTOR, FMSO	DR. LORDINIO A. VERGARA VICE-PRESIDENT FOR FINANCE AND ADMINISTRATION	DR. BERT J. TUGA PRESIDENT	APR., 2026 CAD BY: JDT	ELEVATIONS SECTIONS SCHEDULE OF DOORS AND WINDOWS	A-09 A 10



FFL

D 4	TYPE	DESCRIPTION
	SWING TYPE DOOR	12mm THK FRAME LESS TEMPERED GLASS DOOR WITH STAINLESS H-HANDLE, LOCK COMPLETE W/ ACCESSORIES
	QUANTITY	LOCATION

1 SET	GROUND FLOOR STORAGE
-------	----------------------

W 1	TYPE	DESCRIPTION
	JALOUSIE TYPE WINDOW	TINTED GLASS BLADES ON ALUMINUM FRAME (ALANOK FINISH), COMPLETE WITH ACCESSORIES & 16mm SQUARE BAR GRILLS, PAINTED
	QUANTITY	LOCATION

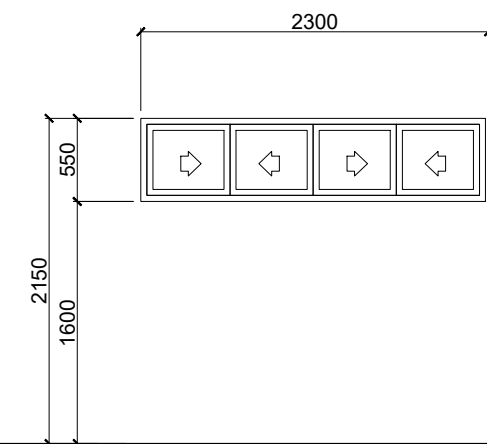
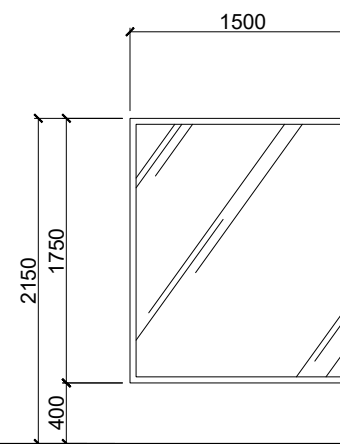
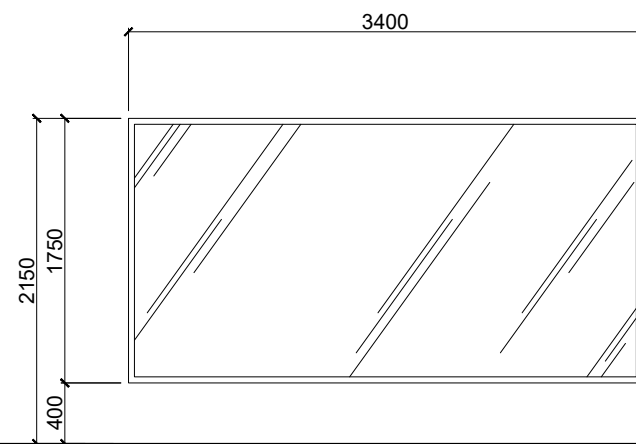
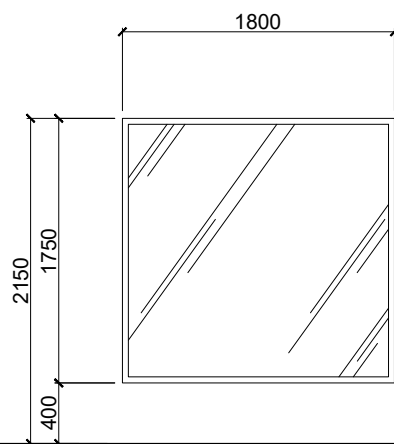
8 SETS	COMFORT ROOM
--------	--------------

W 2	TYPE	DESCRIPTION
	JALOUSIE TYPE WINDOW	TINTED GLASS BLADES ON ALUMINUM FRAME (ALANOK FINISH), COMPLETE WITH ACCESSORIES & 16mm SQUARE BAR GRILLS, PAINTED
	QUANTITY	LOCATION

8 SETS	STALLS
--------	--------

W 3	TYPE	DESCRIPTION
	SLIDING TYPE WINDOW	6mm THK CLEAR GLASS ON ALUMINUM FRAME (ALANOK FINISH) COMPLETE W/ ACCESSORIES & OPERABLE 16mm SQUARE BAR GRILLS, PAINTED
	QUANTITY	LOCATION

16 SET	STALLS
--------	--------



W 4	TYPE	DESCRIPTION
	FIXED TYPE WINDOW	10mm THK TEMPERED CLEAR GLASS ON ALUMINUM FRAME (ANALOK) WITH ROLL-UP COVER
	QUANTITY	LOCATION

1 SET	STORE
-------	-------

W 5	TYPE	DESCRIPTION
	FIXED TYPE WINDOW	10mm THK TEMPERED CLEAR GLASS ON ALUMINUM FRAME (ANALOK) WITH ROLL-UP COVER
	QUANTITY	LOCATION

1 SET	STORE
-------	-------

W 6	TYPE	DESCRIPTION
	FIXED TYPE WINDOW	10mm THK TEMPERED CLEAR GLASS ON ALUMINUM FRAME (ANALOK) WITH ROLL-UP COVER
	QUANTITY	LOCATION

1 SET	STORE
-------	-------

W 7	TYPE	DESCRIPTION
	SLIDING TYPE WINDOW	4.5mm THK CLEAR GLASS ON ALUMINUM FRAME (ANALOK)
	QUANTITY	LOCATION

1 SET	SECURITY POST
-------	---------------

**1 SCHEDULE OF DOORS AND WINDOWS**  
SCALE 1:50MTS



Republic of the Philippines  
PHILIPPINE NORMAL UNIVERSITY  
Taft Avenue, Manila

PROJECT TITLE:  
REPAIR & IMPROVEMENT OF COMMERCIAL  
STALLS ALONG SAN MARCELINO

PREPARED BY:  
AR. JOHN D. TADEJA JR., RmP  
ARCHITECT, FMSO  
PRC NUMBER 0045490  
PTR NUMBER 37104817

SUBMITTED BY:  
JOHN P. NATIVIDAD  
DIRECTOR, FMSO

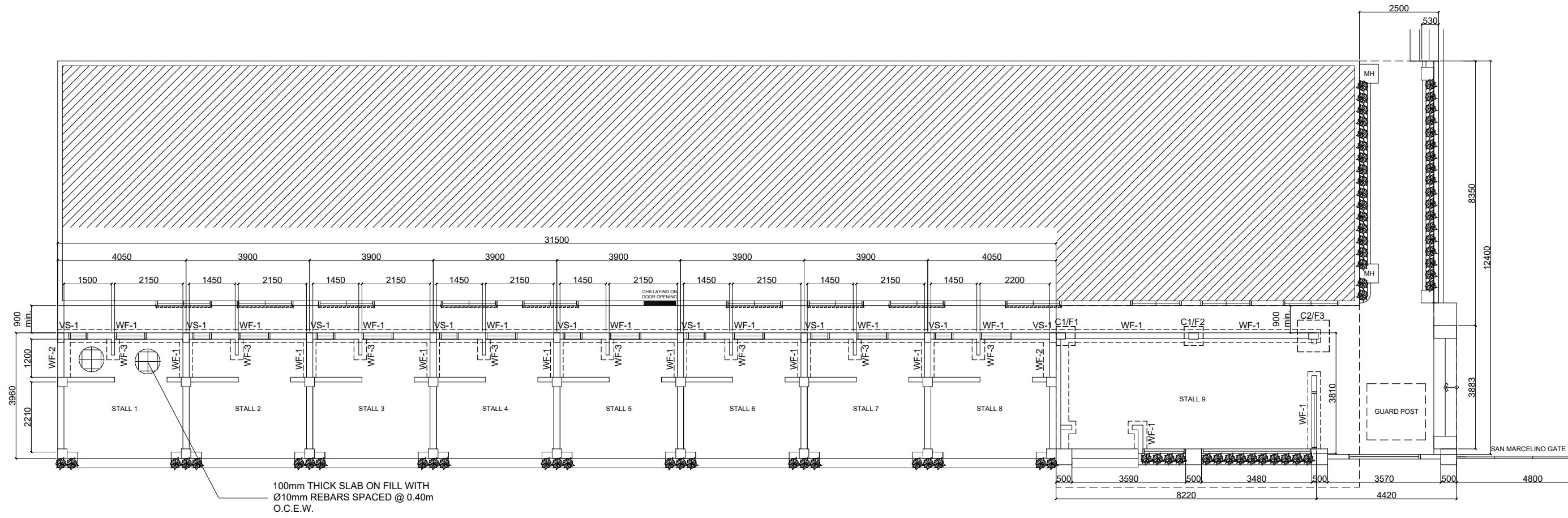
RECOMMENDING APPROVAL:  
DR. LORDINIO A. VERGARA  
VICE-PRESIDENT FOR FINANCE  
AND ADMINISTRATION

APPROVED BY:  
DR. BERT J. TUGA  
PRESIDENT

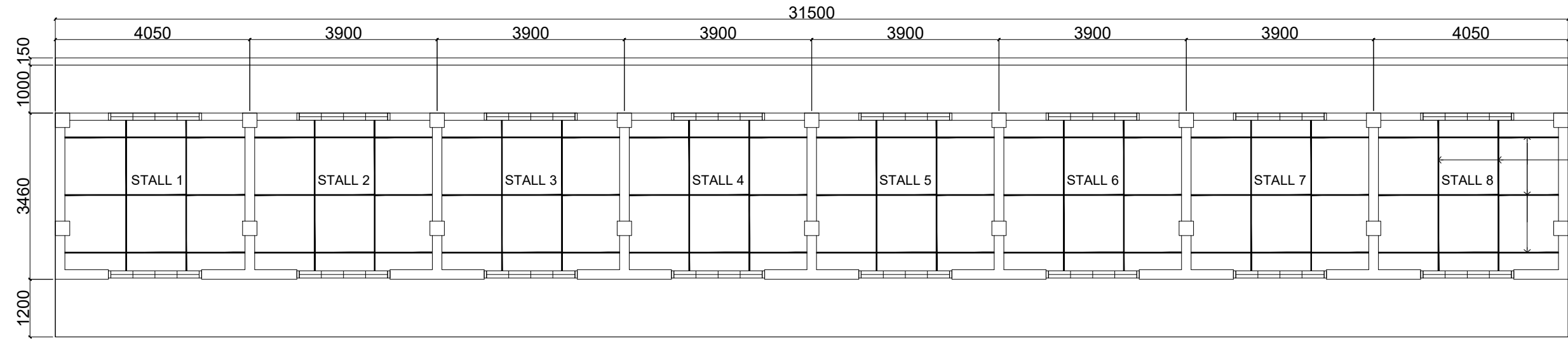
DATE:  
APR., 2026  
CAD BY:  
JDT

SHEET CONTENTS:  
SCHEDULE OF DOORS AND  
WINDOWS  
TYPICAL CABINET DETAILS

SHEET NO.:  
**A-10**  
A 10



**1 FOUNDATION PLAN**  
S-1 SCALE 1:135MTS



LC 100 x 50 x 2.0 CEILING SUPPORT SPACED @ 1.20m O.C. WITH LATERAL SUPPORTS @ EVERY 1/3 SPAN (USE EXISTING PURLINS OR BATTENS)

**1 SECOND FLOOR CEILING SUPPORT FRAMING**  
S-1 SCALE 1:100MTS



Republic of the Philippines  
PHILIPPINE NORMAL UNIVERSITY  
Taft Avenue, Manila

PROJECT TITLE:  
REPAIR AND IMPROVEMENT OF  
PNU MAIN STAGE

PREPARED BY:  
ENGR. ROGELLE P. DE LAS ALAS  
CIVIL ENGINEER, FMSO  
PRC NUMBER 0146853  
PTR NUMBER 38049467

SUBMITTED BY:  
JOHN P. NATIVIDAD  
DIRECTOR, FMSO

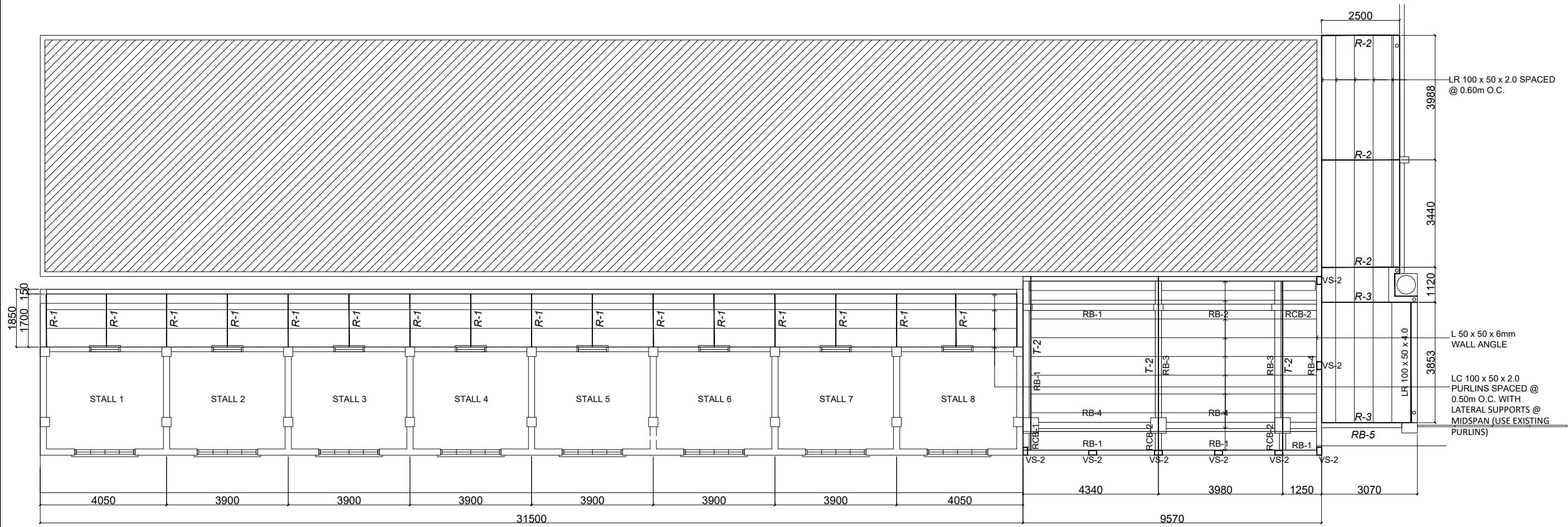
RECOMMENDING APPROVAL:  
LORDINIO A. VERGARA, PH.D.  
VICE-PRESIDENT FOR FINANCE  
AND ADMINISTRATION

APPROVED BY:  
BERT J. TUGA, PH.D.  
PRESIDENT

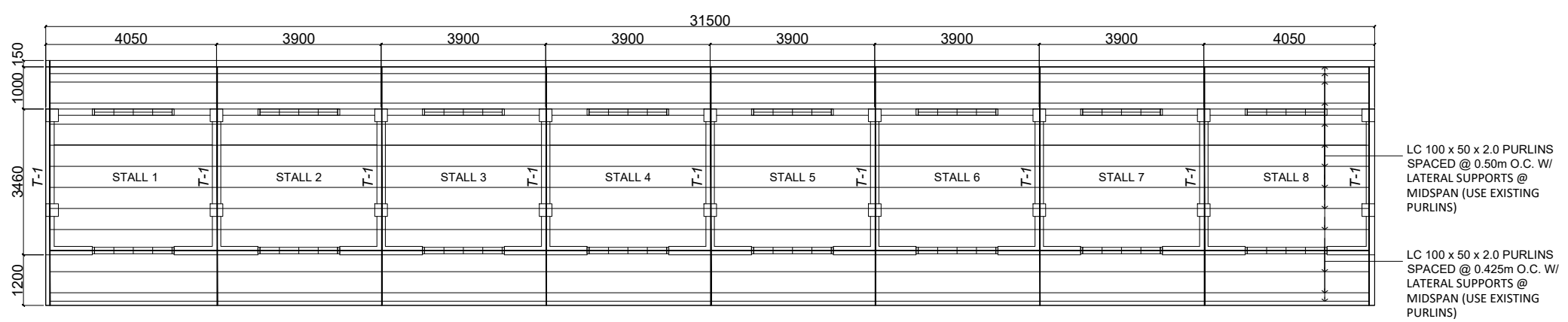
DATE:  
APRIL 2026  
CAD BY:  
JDT

SHEET CONTENTS:  
FOUNDATION PLAN  
CEILING SUPPORT


SHEET NO.:  
S-01  
S 6

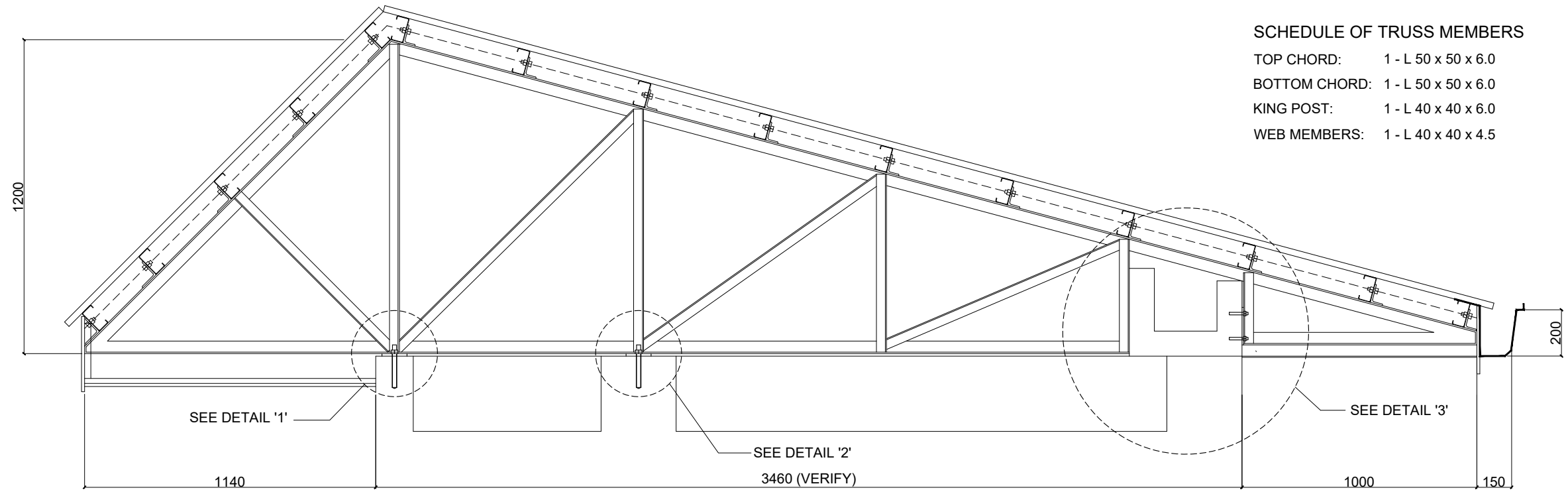


**1 GROUND FLOOR ROOF FRAMING**  
 S-2 SCALE 1:135MTS



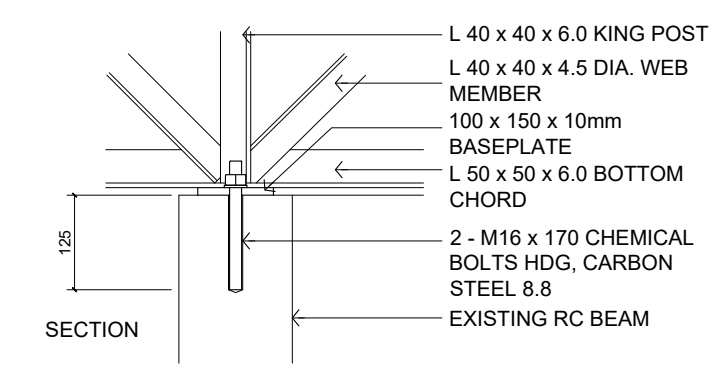
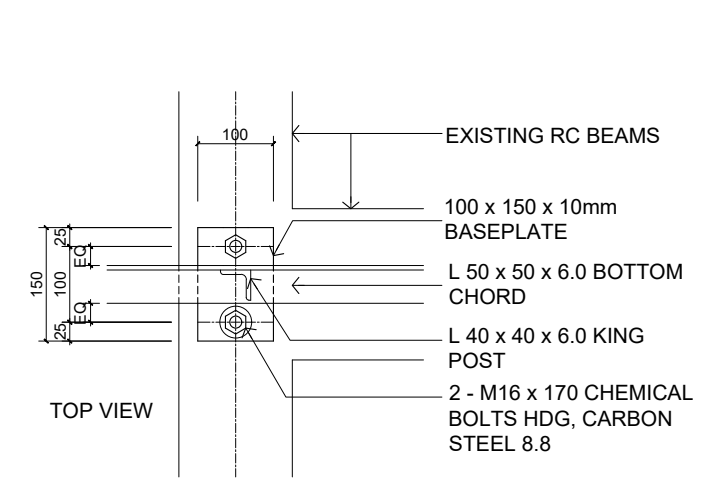
**2 SECOND FLOOR ROOF FRAMING**  
 S-2 SCALE 1:135MTS

 Republic of the Philippines <b>PHILIPPINE NORMAL UNIVERSITY</b> Taft Avenue, Manila	PROJECT TITLE:	PREPARED BY:	SUBMITTED BY:	RECOMMENDING APPROVAL:	APPROVED BY:	DATE:	SHEET CONTENTS:	SHEET NO.:
	REPAIR AND IMPROVEMENT OF PNU MAIN STAGE	ENGR. ROGELLE P. DE LAS ALAS CIVIL ENGINEER, FMSO	JOHN P. NATIVIDAD DIRECTOR, FMSO	LORDINIO A. VERGARA, PH.D. VICE-PRESIDENT FOR FINANCE AND ADMINISTRATION	BERT J. TUGA, PH.D. PRESIDENT	APRIL 2026	ROOF FRAMING	S-02
		PRC NUMBER 0146853 PTR NUMBER 38049467				CAD BY: JDT		

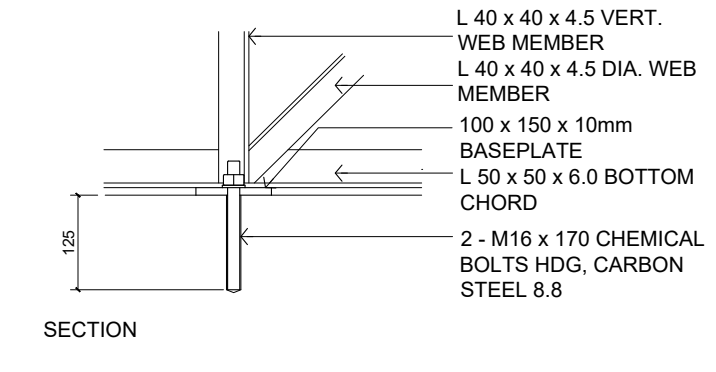
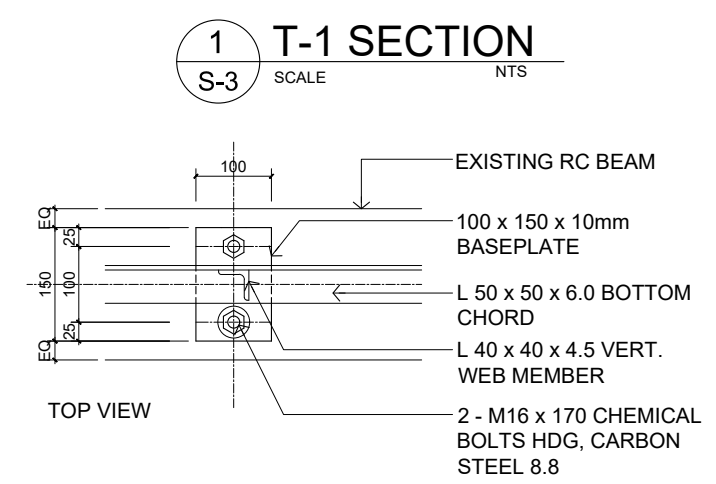


**SCHEDULE OF TRUSS MEMBERS**

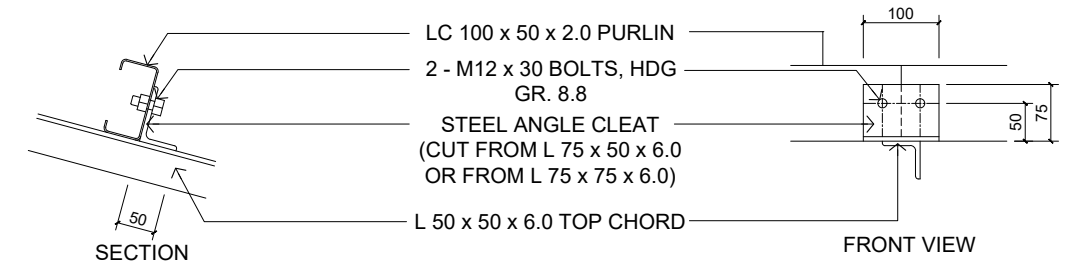
TOP CHORD:	1 - L 50 x 50 x 6.0
BOTTOM CHORD:	1 - L 50 x 50 x 6.0
KING POST:	1 - L 40 x 40 x 6.0
WEB MEMBERS:	1 - L 40 x 40 x 4.5



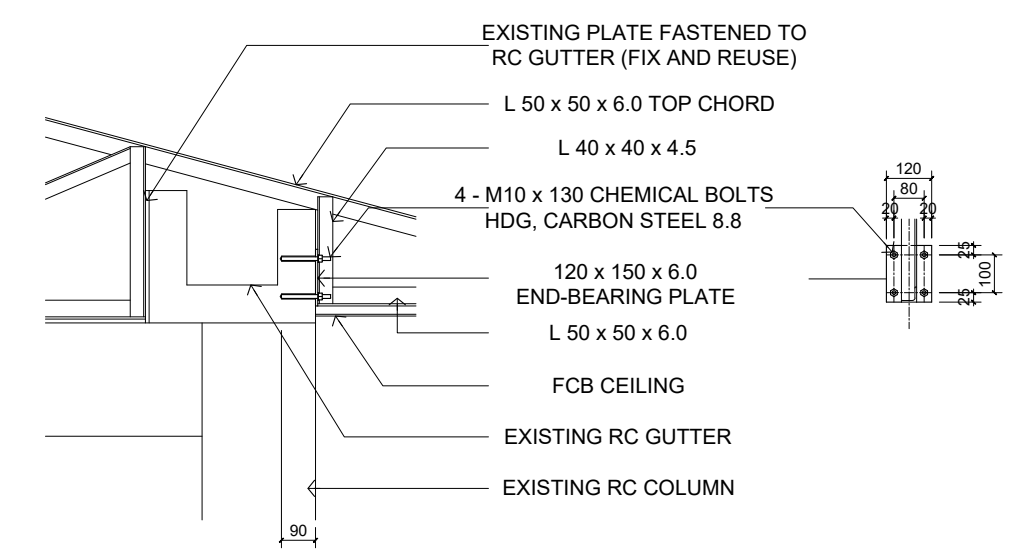
**DETAIL '1'**



**DETAIL '2'**



**STEEL CLEAT DETAIL**



**DETAIL '3'**

**2 CONNECTION DETAILS**  
SCALE 1:10MTS



Republic of the Philippines  
PHILIPPINE NORMAL UNIVERSITY  
Taft Avenue, Manila

PROJECT TITLE:	REPAIR AND IMPROVEMENT OF PNU MAIN STAGE
----------------	--

PREPARED BY:	ENGR. ROGELLE P. DE LAS ALAS CIVIL ENGINEER, FMSO
PRC NUMBER	0146853
PTR NUMBER	38049467

SUBMITTED BY:	JOHN P. NATIVIDAD DIRECTOR, FMSO
---------------	-------------------------------------

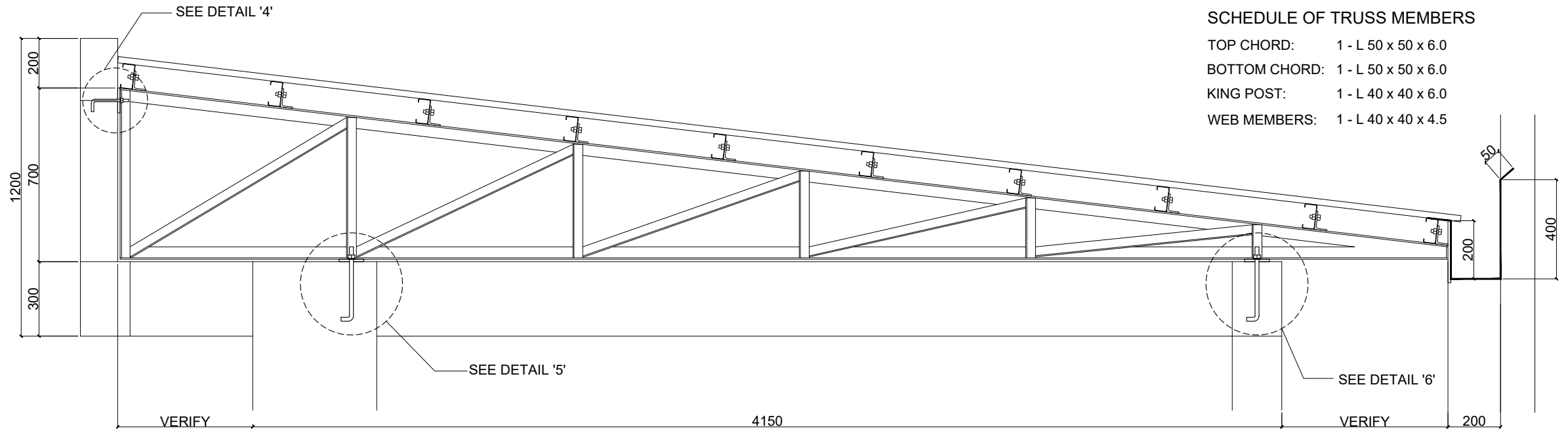
RECOMMENDING APPROVAL:	LORDINIO A. VERGARA, PH.D. VICE-PRESIDENT FOR FINANCE AND ADMINISTRATION
------------------------	---

APPROVED BY:	BERT J. TUGA, PH.D. PRESIDENT
--------------	----------------------------------

DATE:	APRIL 2026
CAD BY:	JDT

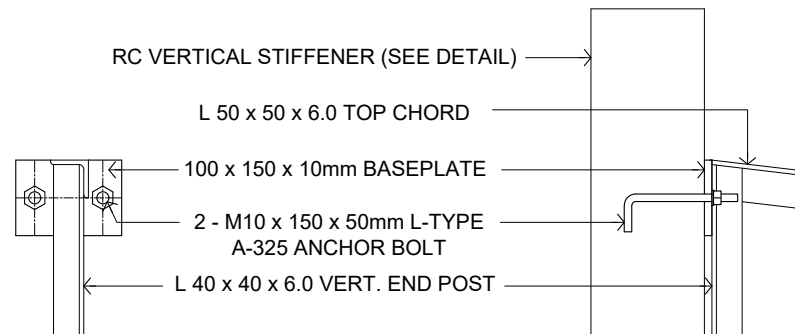
SHEET CONTENTS:	TRUSS SECTION CONNECTION DETAILS
-----------------	----------------------------------

SHEET NO.:	<b>S-03</b>
	S 6



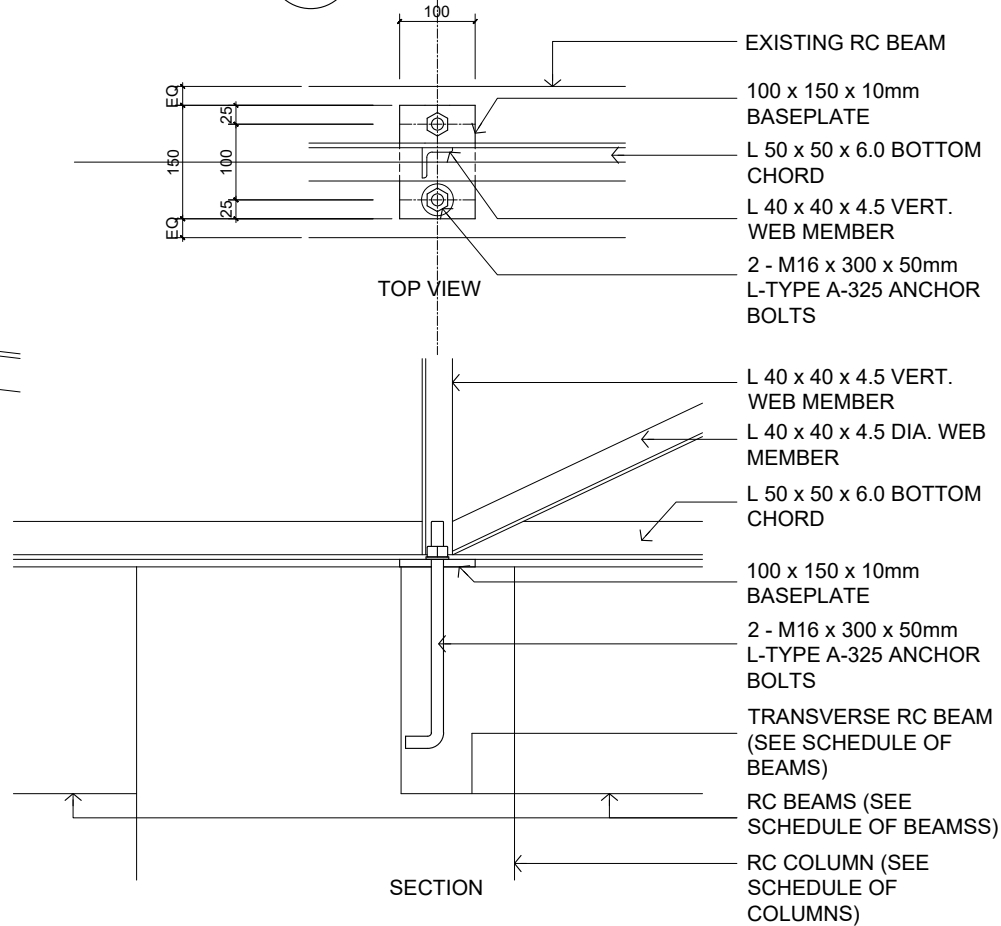
**SCHEDULE OF TRUSS MEMBERS**

- TOP CHORD: 1 - L 50 x 50 x 6.0
- BOTTOM CHORD: 1 - L 50 x 50 x 6.0
- KING POST: 1 - L 40 x 40 x 6.0
- WEB MEMBERS: 1 - L 40 x 40 x 4.5

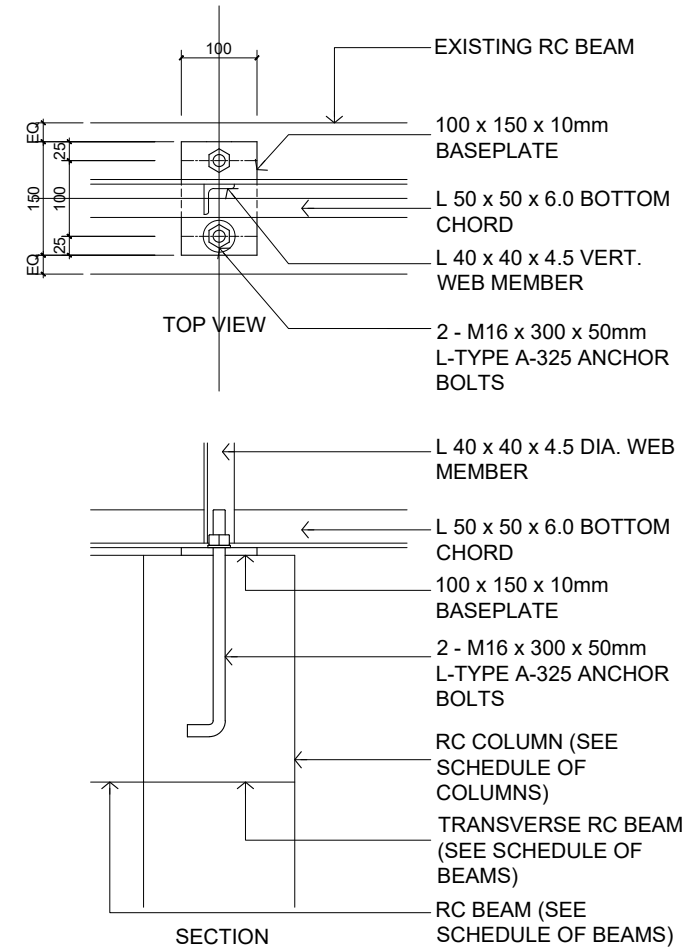


**DETAIL '4'**

**1 T-2 SECTION**  
S-4 SCALE NTS



**DETAIL '5'**



**DETAIL '6'**

**2 CONNECTION DETAILS**  
S-4 SCALE 1:10MTS



Republic of the Philippines  
PHILIPPINE NORMAL UNIVERSITY  
Taft Avenue, Manila

PROJECT TITLE:	REPAIR AND IMPROVEMENT OF PNU MAIN STAGE
----------------	--

PREPARED BY:	ENGR. ROGELLE P. DE LAS ALAS CIVIL ENGINEER, FMSO
PRC NUMBER	0146853
PTR NUMBER	38049467

SUBMITTED BY:	JOHN P. NATIVIDAD DIRECTOR, FMSO
---------------	-------------------------------------

RECOMMENDING APPROVAL:	LORDINIO A. VERGARA, PH.D. VICE-PRESIDENT FOR FINANCE AND ADMINISTRATION
------------------------	---

APPROVED BY:	BERT J. TUGA, PH.D. PRESIDENT
--------------	----------------------------------

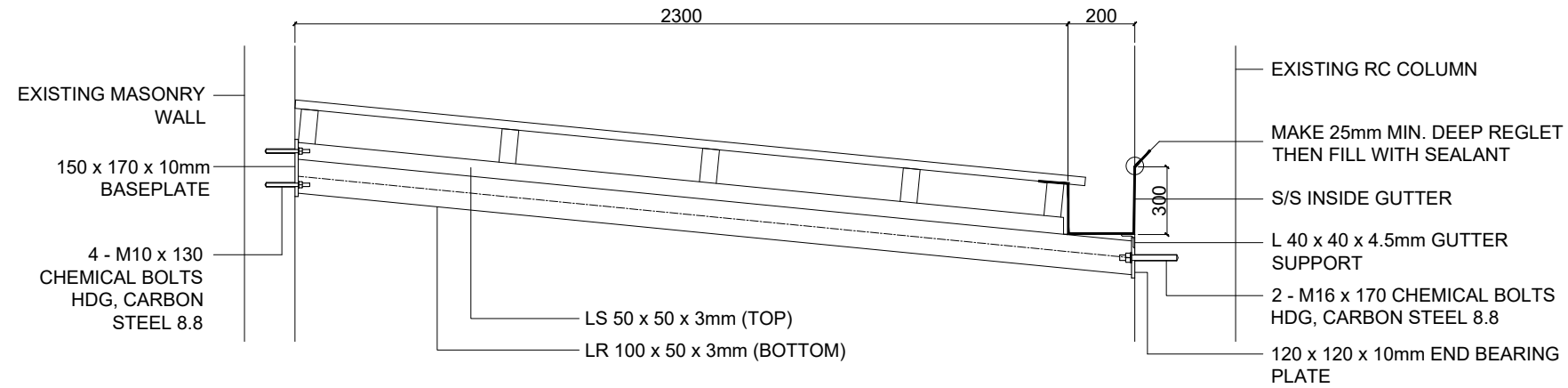
DATE:	APRIL 2026
CAD BY:	JDT

SHEET CONTENTS:	TRUSS SECTION CONNECTION DETAILS
-----------------	----------------------------------

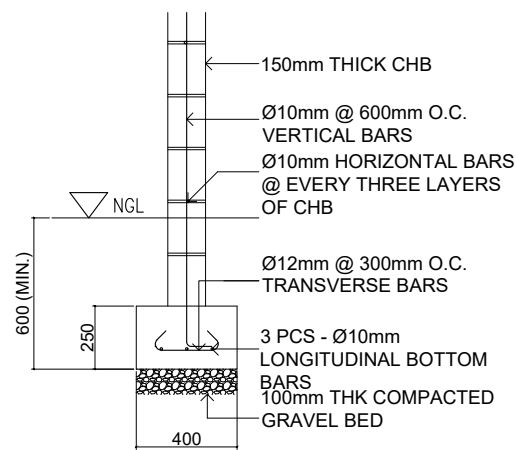
SHEET NO.:	<b>S-04</b>
	S 6

**SCHEDULE OF RAFTERS**

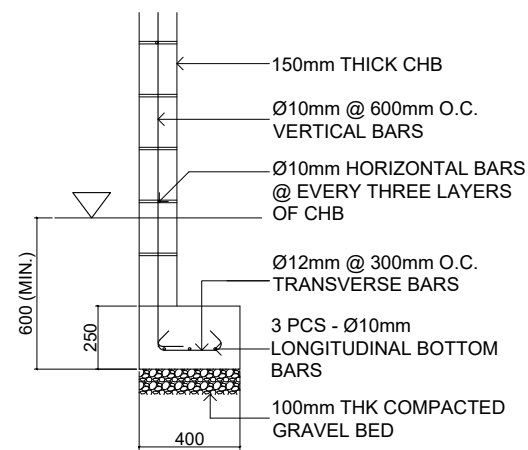
- R-1: 1 - L 50 x 50 x 6.0
- R-2: (SEE DETAIL OF R-2)
- R-3: 1 - LR 100 x 50 x 3.0



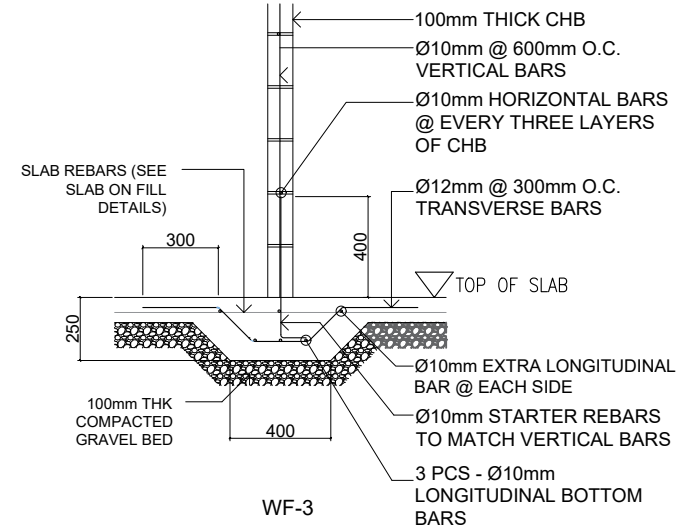
**1 RAFTER SECTION (R-2)**  
S-5 SCALE NTS



WF-1

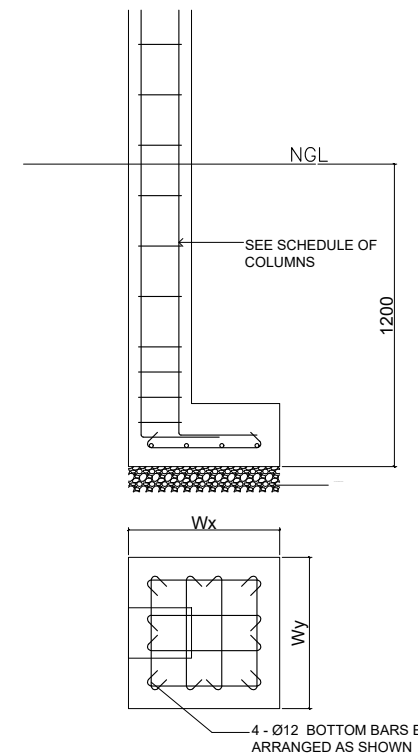


WF-2

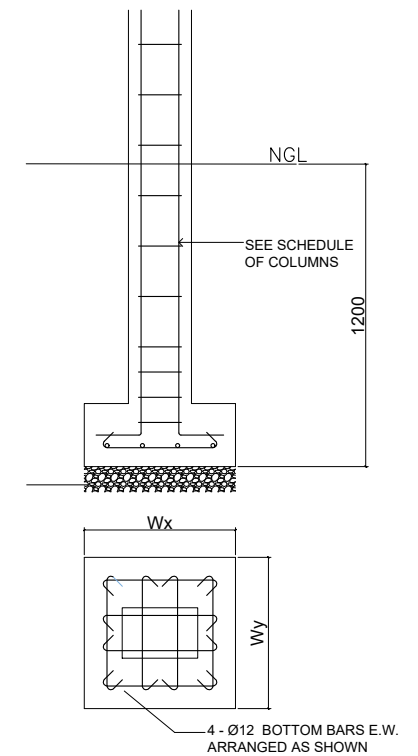


WF-3

**2 WALL FOOTING DETAILS**  
S-5 SCALE 1:30MTS



SIDE FOOTING



INTERIOR FOOTING

**3 COLUMN FOOTING DETAILS**  
S-5 SCALE 1:30MTS



Republic of the Philippines  
PHILIPPINE NORMAL UNIVERSITY  
Taft Avenue, Manila

PROJECT TITLE:	PREPARED BY:	SUBMITTED BY:	RECOMMENDING APPROVAL:	APPROVED BY:	DATE:	SHEET CONTENTS:	SHEET NO.:
REPAIR AND IMPROVEMENT OF PNU MAIN STAGE	ENGR. ROGELLE P. DE LAS ALAS CIVIL ENGINEER, FMSO	JOHN P. NATIVIDAD DIRECTOR, FMSO	LORDINIO A. VERGARA, PH.D. VICE-PRESIDENT FOR FINANCE AND ADMINISTRATION	BERT J. TUGA, PH.D. PRESIDENT	APRIL 2026	RAFTER SECTION FOOTING DETAILS	S-05
	PRC NUMBER 0146853				CAD BY:		
	PTR NUMBER 38049467				JDT		
						S	6

### SCHEDULE OF COLUMNS

		C-1		C-2		VS-1		VS-2		
2F LEVEL										
	DIMENSIONS	Bx (mm)		Bx (mm)		Bx (mm)		Bw (mm)	150	
		By (mm)		By (mm)		By (mm)		Bh (mm)	250	
	VERT. BARS	Ø (mm)		Ø (mm)		Ø (mm)		Ø (mm)	12	
		N (pcs)		N (pcs)		N (pcs)		N (pcs)	4	
	LATERAL TIES	Ø (mm)		Ø (mm)		Ø (mm)		Ø (mm)	10	
N (pcs)			N (pcs)		N (pcs)		N (pcs)	1		
S (mm)			S (mm)		S (mm)		S (mm)	1 @ 50, 3 @ 100 REST @ 150 OC		
FOUNDATION TO 2F LEVEL										
	DIMENSIONS	Bx (mm)	200	Bx (mm)	200	Bx (mm)	150	Bx (mm)		
		By (mm)	300	By (mm)	300	By (mm)	300	By (mm)		
	VERT. BARS	Ø (mm)	16	Ø (mm)	16	Ø (mm)	12	Ø (mm)		
		N (pcs)	4	N (pcs)	6	N (pcs)	6	N (pcs)		
	LATERAL TIES	Ø (mm)	10	Ø (mm)	10	Ø (mm)	10	Ø (mm)		
		N (pcs)	1	N (pcs)	2	N (pcs)	2	N (pcs)		
		S (mm)	1 @ 50, 3 @ 100 REST @ 200 OC	S (mm)	1 @ 50, 3 @ 100 REST @ 200 OC	S (mm)	1 @ 50, 3 @ 100 REST @ 150 OC	S (mm)		
			C-1		C-2		VS-1		VS-2	

### SCHEDULE OF BEAMS

CANT. ROOF BEAMS			REINFORCEMENTS				STIRRUPS		
BEAM MARK	B (mm)	H (mm)		Ø (mm)	CONT. SUPPORT	MIDSPAN	FREE END	Ø (mm)	S (mm)
RCB-1	200	300	TOP BARS	16	2	2	2	10	1 @ 50, 6 @ 100 REST @ 150 OC
			BOTTOM BARS	16	2	2	2		
RCB-2	200	300	TOP BARS	16	3	3	2	10	1 @ 50, 6 @ 100 REST @ 150 OC
			BOTTOM BARS	16	2	2	2		

### ROOF BEAMS

			REINFORCEMENTS				STIRRUPS		
BEAM MARK	B (mm)	H (mm)		Ø (mm)	LEFT SUPPORT	MIDSPAN	RIGHT SUPPORT	Ø (mm)	S (mm)
RB-1	200	300	TOP BARS	16	2	2	2	10	1 @ 50, 6 @ 100 REST @ 150 OC
			BOTTOM BARS	16	2	2	2		
RB-2	200	300	TOP BARS	16	2	2	3	10	1 @ 50, 6 @ 100 REST @ 150 OC
			BOTTOM BARS	16	2	2	2		
RB-3	200	300	TOP BARS	16	3	2	2	10	1 @ 50, 6 @ 100 REST @ 150 OC
			BOTTOM BARS	16	2	2	2		
RB-4	160	300	TOP BARS	16	2	2	2	10	1 @ 50, 6 @ 100 REST @ 150 OC
			BOTTOM BARS	16	2	2	2		
RB-5	160	400	TOP BARS	16	4	2	2	10	1 @ 50, 8 @ 100 REST @ 175 OC
			BOTTOM BARS	16	2	4	2		

NOTE: FOR ADJOINING BEAMS/GIRDERS WITH DIFFERENT REBAR AREAS, GREATER AREA SHALL GOVERN

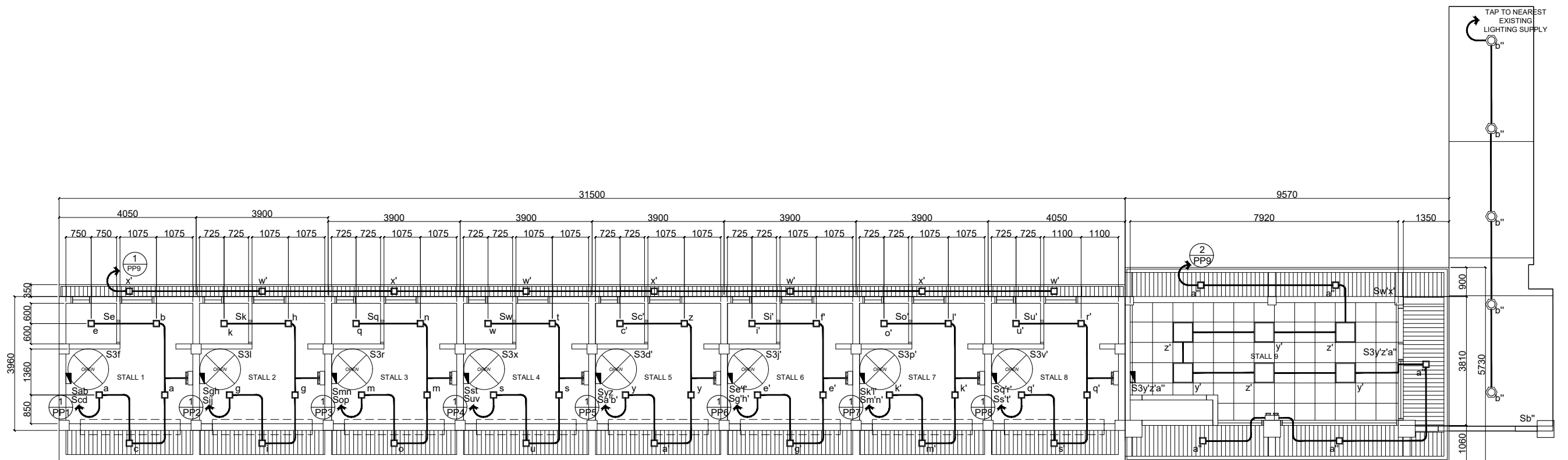
### SCHEDULE OF FOOTINGS

FOOTING MARK	Wx (mm)	Wy (mm)	T (mm)	TYPE	BOTTOM REBARS			DEPTH OF EXCAVATION (m)
					Ø (mm)	ALONG 'Wx'	ALONG 'Wy'	
F-1	600	600	250	SIDE	12	4	4	1.20 - 1.50
F-2	600	600	250	INTERIOR	12	4	4	1.20 - 1.50
F-3	900	900	250	INTERIOR	12	6	6	1.20 - 1.50

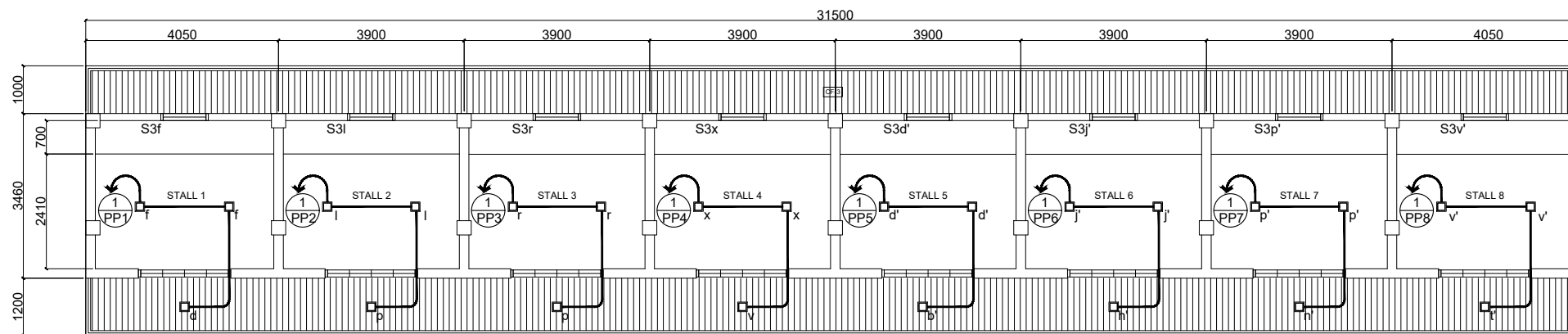


Republic of the Philippines  
PHILIPPINE NORMAL UNIVERSITY  
Taft Avenue, Manila

PROJECT TITLE:	PREPARED BY:	SUBMITTED BY:	RECOMMENDING APPROVAL:	APPROVED BY:	DATE:	SHEET CONTENTS:	SHEET NO.:
REPAIR AND IMPROVEMENT OF PNU MAIN STAGE	ENGR. ROGELLE P. DE LAS ALAS CIVIL ENGINEER, FMSO	JOHN P. NATIVIDAD DIRECTOR, FMSO	LORDINIO A. VERGARA, PH.D. VICE-PRESIDENT FOR FINANCE AND ADMINISTRATION	BERT J. TUGA, PH.D. PRESIDENT	APRIL 2026	SCHEDULE OF COLUMN, BEAMS & FOOTING	S-06
	PRC NUMBER 0146853 PTR NUMBER 38049467				CAD BY: JDT		S 6



**1 GROUND FLOOR LIGHTING LAYOUT**  
 E-1 SCALE 1:130MTS



**2 SECOND FLOOR LIGHTING LAYOUT**  
 E-1 SCALE 1:130MTS

**LEGEND:**

	- DUPLEX OUTLET
	- GROUND-FAULT CIRCUIT INTERRUPTER
	- ACU OUTLET
	- EMERGENCY LIGHT
	- SINGLE POLE ONE GANG - WS
	- SINGLE POLE TWO GANG - WS
	- SINGLE POLE THREE GANG - WS
	- THREE WAY THREE GANG - WS
	- 12w LED SMD CENTER LIGHT
	- LED PENDANT LIGHT
	- 600mm x 600mm LED PANEL LIGHT



Republic of the Philippines  
 PHILIPPINE NORMAL UNIVERSITY  
 Taft Avenue, Manila

PROJECT TITLE:  
 REPAIR & IMPROVEMENT OF COMMERCIAL  
 STALLS ALONG SAN MARCELINO

PREPARED BY:  
 ENGR. MARK ANTHONY Q. AMUL  
 ELECTRICAL ENGINEER, FMSO  
 PRC NUMBER 74155  
 PTR NUMBER 1541480

SUBMITTED BY:  
 JOHN P. NATIVIDAD  
 DIRECTOR, FMSO

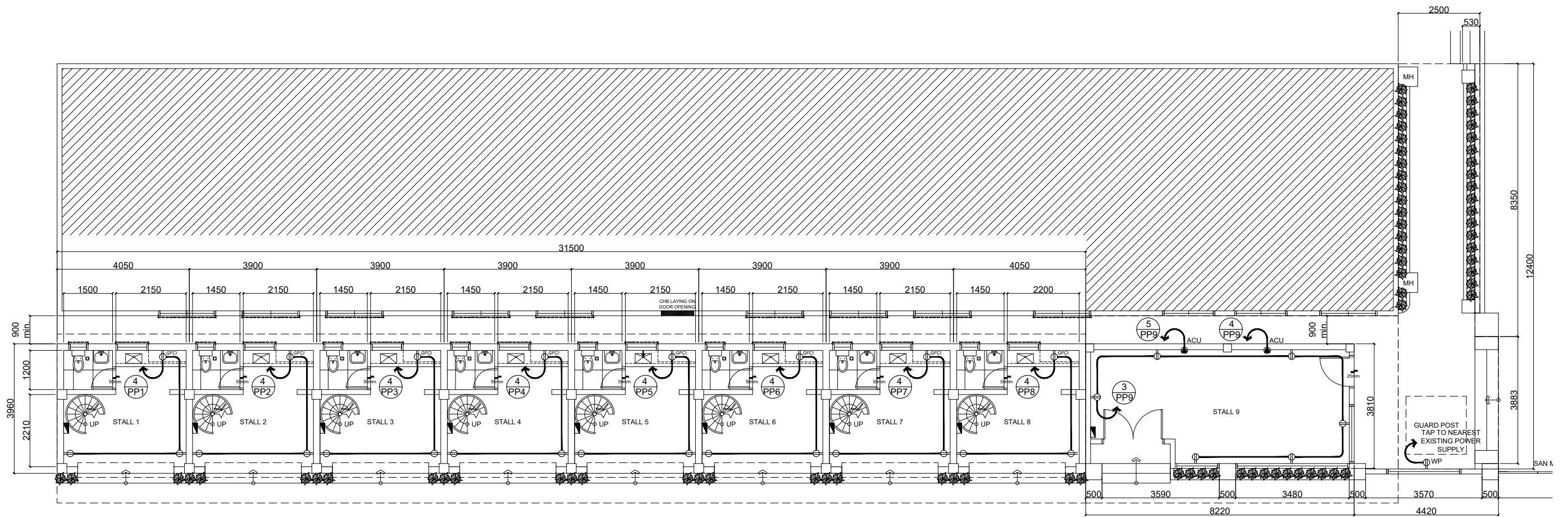
RECOMMENDING APPROVAL:  
 LORDINIO A. VERGARA, PH.D.  
 VICE-PRESIDENT FOR FINANCE  
 AND ADMINISTRATION

APPROVED BY:  
 BERT J. TUGA, PH.D.  
 PRESIDENT

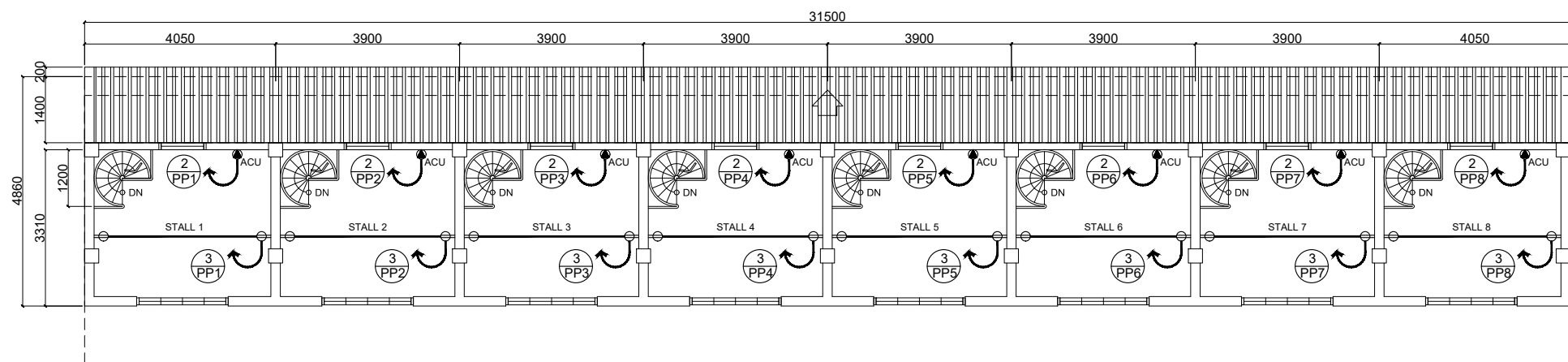
DATE:  
 APRIL 2026  
 CAD BY:  
 JDT

SHEET CONTENTS:  
 LIGHTING LAYOUT

SHEET NO.:  
**E-01**  
 E 3



**1** GROUND FLOOR POWER LAYOUT  
 E-2 SCALE 1:130MTS



**2** SECOND FLOOR POWER LAYOUT  
 E-2 SCALE 1:130MTS

LEGEND:	
	- DUPLEX OUTLET
	- GROUND-FAULT CIRCUIT INTERRUPTER
	- ACU OUTLET
	- EMERGENCY LIGHT
Sa	- SINGLE POLE ONE GANG - WS
Sab	- SINGLE POLE TWO GANG - WS
Sabc	- SINGLE POLE THREE GANG - WS
S3a	- THREE WAY THREE GANG - WS
	- 12w LED SMD CENTER LIGHT
	- LED PENDANT LIGHT
	- 600mm x 600mm LED PANEL LIGHT



Republic of the Philippines  
 PHILIPPINE NORMAL UNIVERSITY  
 Taft Avenue, Manila

PROJECT TITLE:  
 REPAIR & IMPROVEMENT OF COMMERCIAL  
 STALLS ALONG SAN MARCELINO

PREPARED BY:  
 ENGR. MARK ANTHONY Q. AMUL  
 ELECTRICAL ENGINEER, FMSO  
 PRC NUMBER 74155  
 PTR NUMBER 1541480

SUBMITTED BY:  
 JOHN P. NATIVIDAD  
 DIRECTOR, FMSO

RECOMMENDING APPROVAL:  
 LORDINIO A. VERGARA, PH.D.  
 VICE-PRESIDENT FOR FINANCE  
 AND ADMINISTRATION

APPROVED BY:  
 BERT J. TUGA, PH.D.  
 PRESIDENT

DATE:  
 APRIL 2026  
 CAD BY:  
 JDT

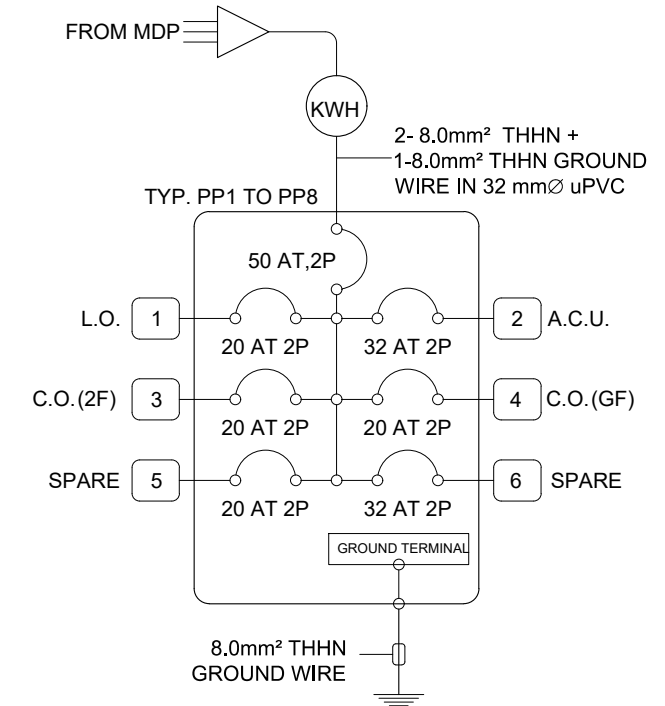
SHEET CONTENTS:  
 POWER LAYOUT

SHEET NO.:  
**E-02**  
 E 3

PP STALL TYPICAL																	
CKT NO.	LOAD DESCRIPTION	NO. OF L.O.	NO. OF C.O.					VOLTS	VOLT AMP. RATING	AMPERE LOAD				OVER CURRENT			SIZE OF WIRE, GROUND WIRES & CONDUIT
				S1	S2	S3	S3W			ABØ	BCØ	CAØ	3Ø	AT	P	AF	
1	LIGHTING OUTLET	9		1	2		2	230	800	3.5				20	63	2	2-3.5 mm <sup>2</sup> THHN Copper Wire + 1-3.5 mm <sup>2</sup> THHN (G) @ 20mm uPVC
2	ACU OUTLET		1					230	2300	10				32	63	2	2-5.5 mm <sup>2</sup> THHN Copper Wire + 1-5.5 mm <sup>2</sup> THHN (G) @ 20mm uPVC
3	CONVENIENCE OUTLET 2F		2					230	360	1.6				20	63	2	2-3.5 mm <sup>2</sup> THHN Copper Wire + 1-3.5 mm <sup>2</sup> THHN (G) @ 20mm uPVC
4	CONVENIENCE OUTLET GF		3					230	540	2.3				20	63	2	2-3.5 mm <sup>2</sup> THHN Copper Wire + 1-3.5 mm <sup>2</sup> THHN (G) @ 20mm uPVC
5	SPARE							230	1500	6.52				20	63	2	
6	SPARE							230	1500	6.52				32	63	2	
	TOTAL	9	6	1	2	0	2		7000	30.43	0.00	0.00	0				

TOTAL FULL LOAD CURRENT @100% DF:  $[30.43 + (.25 \times 10)] \times 1 = 32.931$  AMPERES  
FEEDER SIZE: 2-8.0mm<sup>2</sup> THHN + 1-8.0mm<sup>2</sup> TW GROUND WIRE @ 32 mm uPVC  
PROTECTION: 1-50 AT, 2P, 240V, 60 Hz, 25 KAIC, 100 AF MOLDED CASE MAIN CIRCUIT BREAKER

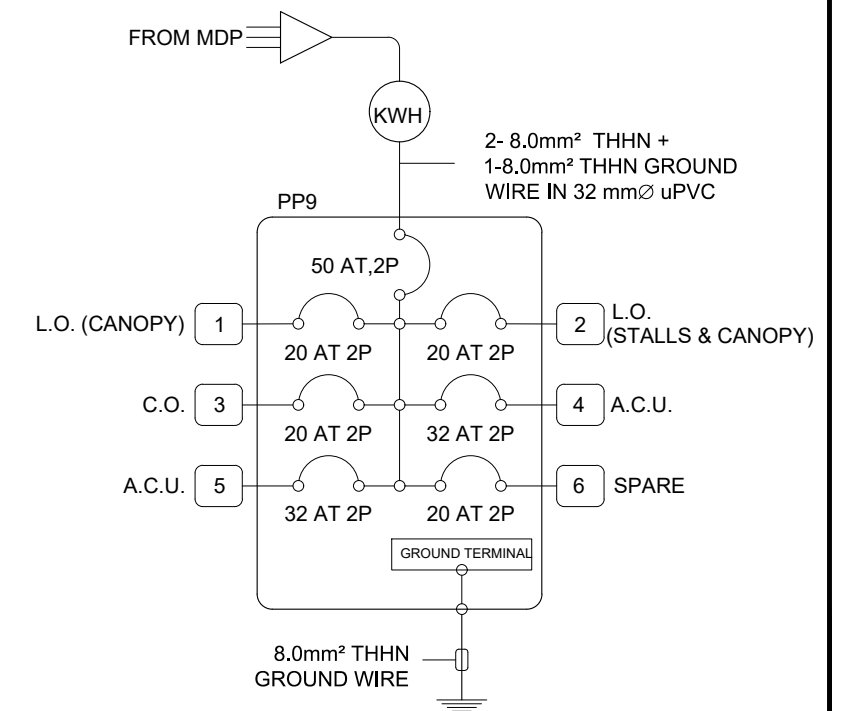
NOTE: ALL BRANCH CIRCUIT BREAKERS ARE BOLT-ON AND MINIATURE TYPE



PP PNU STALL																	
CKT NO.	LOAD DESCRIPTION	NO. OF L.O.	NO. OF C.O.					VOLTS	VOLT AMP. RATING	AMPERE LOAD				OVER CURRENT			SIZE OF WIRE, GROUND WIRES & CONDUIT
				S1	S2	S3	S3W			ABØ	BCØ	CAØ	3Ø	AT	P	AF	
1	LIGHTING OUTLET CANOPY	8			1			230	800	3.5				20	63	2	2-3.5 mm <sup>2</sup> THHN Copper Wire + 1-3.5 mm <sup>2</sup> THHN (G) @ 20mm uPVC
2	L.O. STALL & CANOPY	11			2		6	230	1100	4.8				20	63	2	2-3.5 mm <sup>2</sup> THHN Copper Wire + 1-3.5 mm <sup>2</sup> THHN (G) @ 20mm uPVC
3	CONVENIENCE OUTLET		6					230	1080	4.7				20	63	2	2-3.5 mm <sup>2</sup> THHN Copper Wire + 1-3.5 mm <sup>2</sup> THHN (G) @ 20mm uPVC
4	ACU WINDOW TYPE		2					230	2300	10.0				32	63	2	2-5.5 mm <sup>2</sup> THHN Copper Wire + 1-5.5 mm <sup>2</sup> THHN (G) @ 20mm uPVC
5	ACU WINDOW TYPE							230	2300	10.0				32	63	2	2-5.5 mm <sup>2</sup> THHN Copper Wire + 1-5.5 mm <sup>2</sup> THHN (G) @ 20mm uPVC
6	SPARE							230	1500	6.52				20	63	2	
	TOTAL	19	8	0	3	0	6		9080	39.48	0.00	0.00	0				

TOTAL FULL LOAD CURRENT @100% DF:  $[39.48 + (.25 \times 10)] \times 1 = 41.977$  AMPERES  
FEEDER SIZE: 2-8.0mm<sup>2</sup> THHN + 1-8.0mm<sup>2</sup> TW GROUND WIRE @ 32 mm uPVC  
PROTECTION: 1-50 AT, 2P, 240V, 60 Hz, 25 KAIC, 100 AF MOLDED CASE MAIN CIRCUIT BREAKER

NOTE: ALL BRANCH CIRCUIT BREAKERS ARE BOLT-ON AND MINIATURE TYPE



Republic of the Philippines  
**PHILIPPINE NORMAL UNIVERSITY**  
Taft Avenue, Manila

PROJECT TITLE:  
**REPAIR & IMPROVEMENT OF COMMERCIAL STALLS ALONG SAN MARCELINO**

PREPARED BY:  
**ENGR. MARK ANTHONY Q. AMUL**  
ELECTRICAL ENGINEER, FMSO  
PRC NUMBER 74155  
PTR NUMBER 1541480

SUBMITTED BY:  
**JOHN P. NATIVIDAD**  
DIRECTOR, FMSO

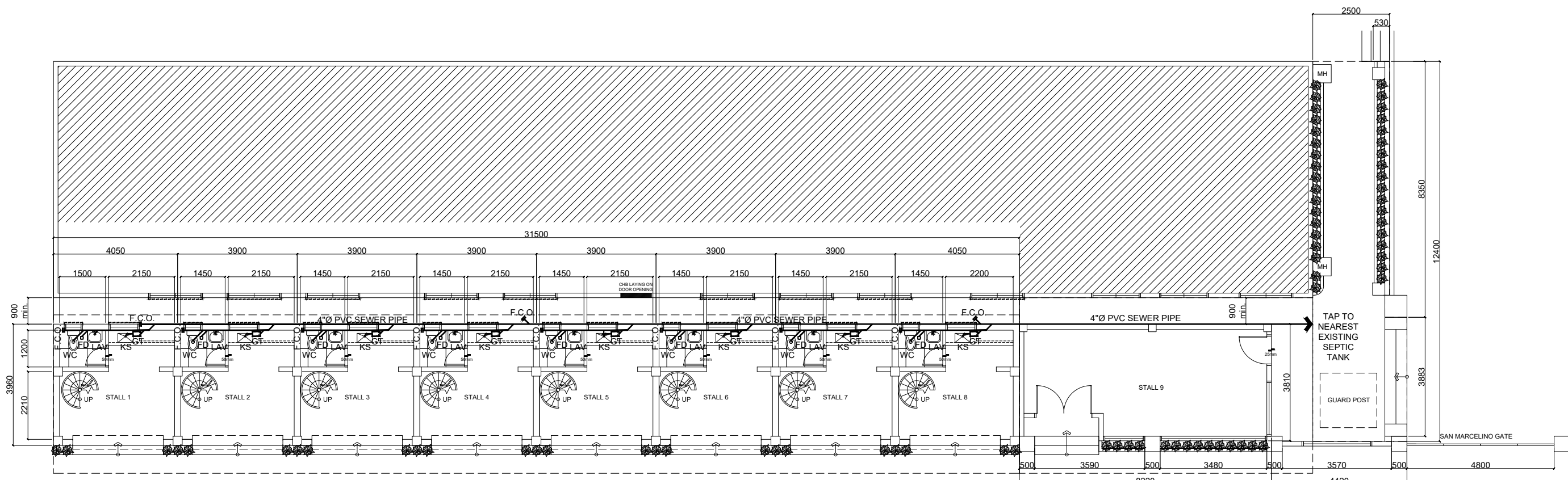
RECOMMENDING APPROVAL:  
**LORDINIO A. VERGARA, PH.D.**  
VICE-PRESIDENT FOR FINANCE AND ADMINISTRATION

APPROVED BY:  
**BERT J. TUGA, PH.D.**  
PRESIDENT

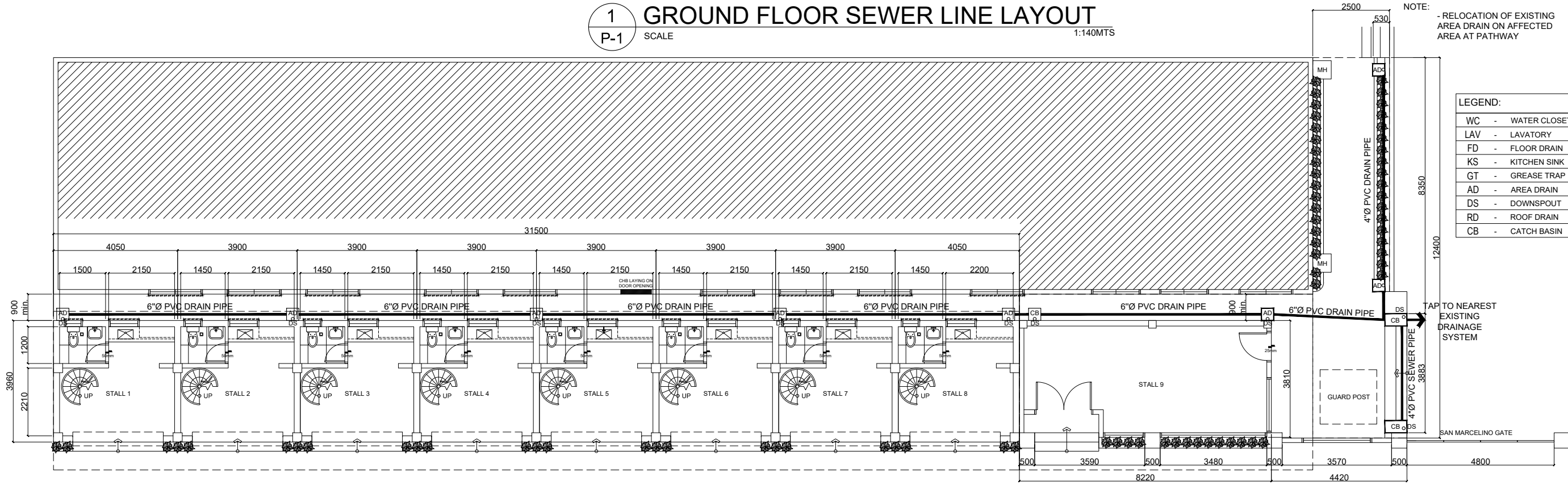
DATE:  
APRIL 2026  
CAD BY:  
JDT

SHEET CONTENTS:  
**SCHEDULE OF LOADS RISER DIAGRAM**

SHEET NO.:  
**E-03**  
E 3



**1 GROUND FLOOR SEWER LINE LAYOUT**  
 SCALE 1:140MTS



**2 GROUND FLOOR STORM DRAIN LAYOUT**  
 SCALE 1:140MTS

NOTE: - RELOCATION OF EXISTING AREA DRAIN ON AFFECTED AREA AT PATHWAY

LEGEND:

WC	- WATER CLOSET
LAV	- LAVATORY
FD	- FLOOR DRAIN
KS	- KITCHEN SINK
GT	- GREASE TRAP
AD	- AREA DRAIN
DS	- DOWNSPOUT
RD	- ROOF DRAIN
CB	- CATCH BASIN

NOTE: - RELOCATION OF EXISTING AREA DRAIN ON AFFECTED AREA AT PATHWAY  
 - 2% MIN. SLOPE ON FLOORING GOING TO DESIGNATED AREA DRAIN  
 - VERIFY ACTUAL LOCATION OF SEPTIC TANK AND DRAINAGE LINE



Republic of the Philippines  
**PHILIPPINE NORMAL UNIVERSITY**  
 Taft Avenue, Manila

PROJECT TITLE:  
**REPAIR AND IMPROVEMENT OF  
 PNU MAIN STAGE**

PREPARED BY:  
**AR. JOHN D. TADEJA JR., RmP**  
 MASTER PLUMBER, FMSO  
 PRC NUMBER 0013769  
 PTR NUMBER 37104818

SUBMITTED BY:  
**JOHN P. NATIVIDAD**  
 DIRECTOR, FMSO

RECOMMENDING APPROVAL:  
**DR. LORDINIO A. VERGARA**  
 VICE-PRESIDENT FOR FINANCE  
 AND ADMINISTRATION

APPROVED BY:  
**DR. BERT J. TUGA**  
 PRESIDENT

DATE:  
 APRIL 2026  
 CAD BY:

SHEET CONTENTS:  
**SEWER LINE  
 DRAINAGE LINE**

SHEET NO.:  
**P-01**  
**P 2**

